



ELECTRONIC COPY

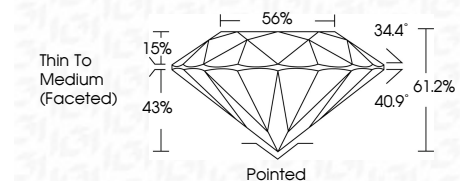
754512263
Report verification at igi.org



June 12, 2026
IGI Report Number **754512263**
Description **NATURAL DIAMOND**
Shape and Cutting Style **ROUND BRILLIANT**
Measurements **7.12 - 7.15 X 4.37 MM**

GRADING RESULTS

Carat Weight **1.35 CARAT**
Color Grade **G**
Clarity Grade **VS 1**
Cut Grade **EXCELLENT**



ADDITIONAL GRADING INFORMATION

Polish **EXCELLENT**
Symmetry **EXCELLENT**
Fluorescence **NONE**
Inscription(s) **(IGI) 754512263**
Comments: IDEAL CUT ROUND BRILLIANT



June 12, 2026
IGI Report No 754512263
ROUND BRILLIANT
1.35 CARAT
Color Grade **G**
Clarity Grade **VS 1**
Depth **EXCELLENT**
Table **61.2%**
Girdle **EXCELLENT**
Thin To Medium (Faceted) **56%**
Culet **Pointed**
Polish **EXCELLENT**
Symmetry **EXCELLENT**
Fluorescence **NONE**
Inscriptions(s) **(IGI) 754512263**
Comments: **IDEAL CUT ROUND BRILLIANT**

DIAMOND REPORT

June 12, 2026
IGI Report Number **754512263**
Description **NATURAL DIAMOND**
Shape and Cutting Style **ROUND BRILLIANT**
Measurements **7.12 - 7.15 X 4.37 MM**

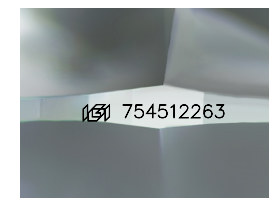
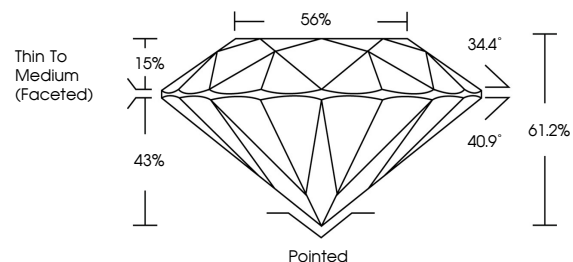
GRADING RESULTS

Carat Weight **1.35 CARAT**
Color Grade **G**
Clarity Grade **VS 1**
Cut Grade **EXCELLENT**

ADDITIONAL GRADING INFORMATION

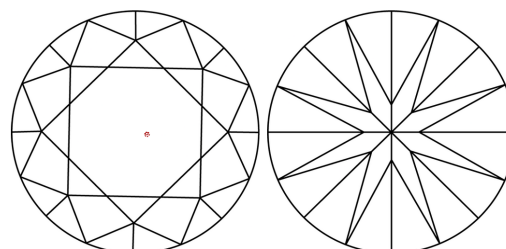
Polish **EXCELLENT**
Symmetry **EXCELLENT**
Fluorescence **NONE**
Inscription(s) **(IGI) 754512263**
Comments: IDEAL CUT ROUND BRILLIANT

PROPORTIONS



Sample Image Used

CLARITY CHARACTERISTICS



KEY TO SYMBOLS

Red symbols indicate internal characteristics.
Green symbols indicate external characteristics.

COLOR

D - F	G - J	K - M	N - R	S - Z	FANCY
Colorless	Near Colorless	Slightly Tinted	Very Light Color	Light Color	

CLARITY

FL	IF	VVS ¹⁻²	VS ¹⁻²	SI ¹⁻²	I ¹⁻³
Flawless	Internally Flawless	Very Very Slightly Included	Very Slightly Included	Slightly Included	Included

