



**ELECTRONIC COPY**

754512235  
Report verification at [igi.org](http://igi.org)

**DIAMOND REPORT**

May 25, 2026  
IGI Report Number **754512235**  
Description **NATURAL DIAMOND**  
Shape and Cutting Style **PRINCESS CUT**  
Measurements **5.50 X 5.30 X 3.96 MM**

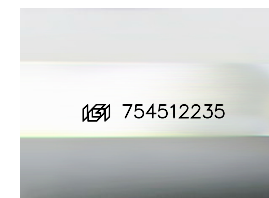
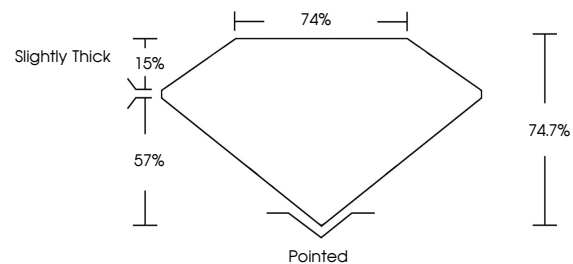
**GRADING RESULTS**

Carat Weight **1.01 CARAT**  
Color Grade **G**  
Clarity Grade **VVS 1**  
Cut Grade **VERY GOOD**

**ADDITIONAL GRADING INFORMATION**

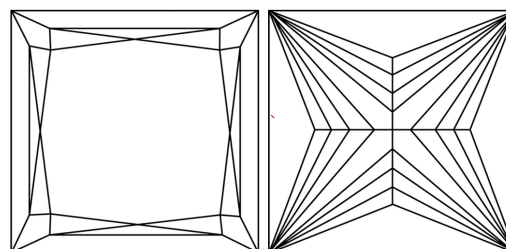
Polish **EXCELLENT**  
Symmetry **EXCELLENT**  
Fluorescence **NONE**  
Inscription(s) **754512235**

**PROPORTIONS**



Sample Image Used

**CLARITY CHARACTERISTICS**



**KEY TO SYMBOLS**

Red symbols indicate internal characteristics.  
Green symbols indicate external characteristics.

**COLOR**

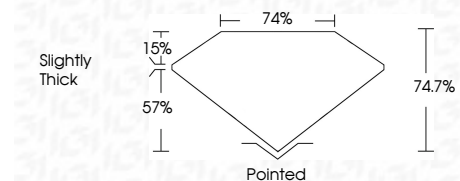
D - F	G - J	K - M	N - R	S - Z	FANCY
Colorless	Near Colorless	Slightly Tinted	Very Light Color	Light Color	

**CLARITY**

FL	IF	VVS <sup>1-2</sup>	VS <sup>1-2</sup>	SI <sup>1-2</sup>	I <sup>1-3</sup>
Flawless	Internally Flawless	Very Very Slightly Included	Very Slightly Included	Slightly Included	Included



May 25, 2026  
IGI Report Number **754512235**  
Description **NATURAL DIAMOND**  
Shape and Cutting Style **PRINCESS CUT**  
Measurements **5.50 X 5.30 X 3.96 MM**  
**GRADING RESULTS**  
Carat Weight **1.01 CARAT**  
Color Grade **G**  
Clarity Grade **VVS 1**  
Cut Grade **VERY GOOD**



**ADDITIONAL GRADING INFORMATION**

Polish **EXCELLENT**  
Symmetry **EXCELLENT**  
Fluorescence **NONE**  
Inscription(s) **754512235**



**IGI**



May 25, 2026  
IGI Report No 754512235  
**PRINCESS CUT**  
5.50 X 5.30 X 3.96 MM  
1.01 CARAT  
Color Grade **G**  
Clarity Grade **VVS 1**  
Cut Grade **VERY GOOD**  
Depth **74.7%**  
Table **74%**  
Girdle **Slightly Thick**  
Culet **Pointed**  
Polish **EXCELLENT**  
Symmetry **EXCELLENT**  
Fluorescence **NONE**  
Inscriptions(s) **754512235**