



**ELECTRONIC COPY**

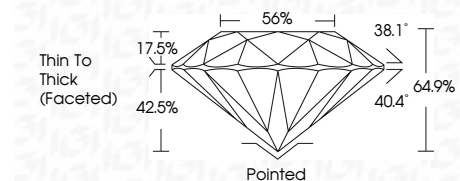
754512225  
Report verification at igi.org



May 19, 2026  
IGI Report Number **754512225**  
Description **NATURAL DIAMOND**  
Shape and Cutting Style **ROUND BRILLIANT**  
Measurements **6.14 - 6.23 X 4.01 MM**

**GRADING RESULTS**

Carat Weight **1.00 CARAT**  
Color Grade **F**  
Clarity Grade **VS 1**  
Cut Grade **VERY GOOD**



**ADDITIONAL GRADING INFORMATION**

Polish **EXCELLENT**  
Symmetry **VERY GOOD**  
Fluorescence **NONE**  
Inscription(s) **(IGI) 754512225**



**IGI**

May 19, 2026  
IGI Report No 754512225  
**ROUND BRILLIANT**  
6.14 - 6.23 X 4.01 MM  
1.00 CARAT  
F  
VS 1  
VERY GOOD  
64.9%  
56%  
Thin To Thick (Faceted)  
Pointed  
EXCELLENT  
VERY GOOD  
NONE  
(IGI) 754512225

**DIAMOND REPORT**

May 19, 2026  
IGI Report Number **754512225**  
Description **NATURAL DIAMOND**  
Shape and Cutting Style **ROUND BRILLIANT**  
Measurements **6.14 - 6.23 X 4.01 MM**

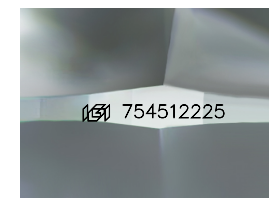
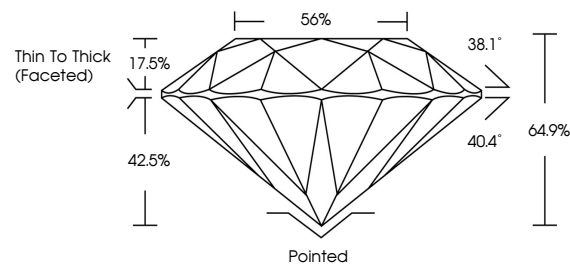
**GRADING RESULTS**

Carat Weight **1.00 CARAT**  
Color Grade **F**  
Clarity Grade **VS 1**  
Cut Grade **VERY GOOD**

**ADDITIONAL GRADING INFORMATION**

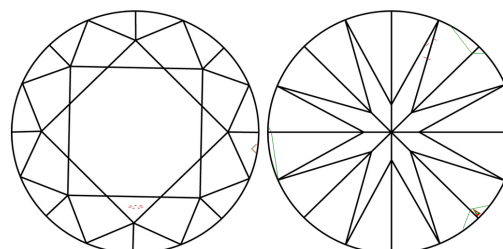
Polish **EXCELLENT**  
Symmetry **VERY GOOD**  
Fluorescence **NONE**  
Inscription(s) **(IGI) 754512225**

**PROPORTIONS**



Sample Image Used

**CLARITY CHARACTERISTICS**



**KEY TO SYMBOLS**

Red symbols indicate internal characteristics.  
Green symbols indicate external characteristics.

**COLOR**

D - F	G - J	K - M	N - R	S - Z	FANCY
Colorless	Near Colorless	Slightly Tinted	Very Light Color	Light Color	

**CLARITY**

FL	IF	VVS <sup>1-2</sup>	VS <sup>1-2</sup>	SI <sup>1-2</sup>	I <sup>1-3</sup>
Flawless	Internally Flawless	Very Very Slightly Included	Very Slightly Included	Slightly Included	Included

