



ELECTRONIC COPY

754512214
Report verification at igi.org

DIAMOND REPORT

May 23, 2026
IGI Report Number **754512214**
Description **NATURAL DIAMOND**
Shape and Cutting Style **ROUND BRILLIANT**
Measurements **7.97 - 8.03 X 5.01 MM**

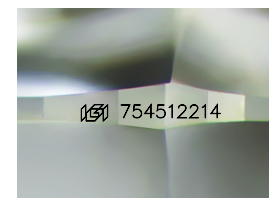
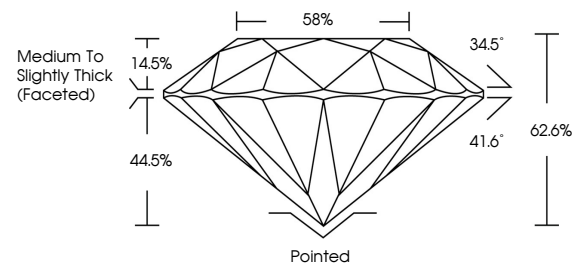
GRADING RESULTS

Carat Weight **2.00 CARATS**
Color Grade **G**
Clarity Grade **SI 2**
Cut Grade **EXCELLENT**

ADDITIONAL GRADING INFORMATION

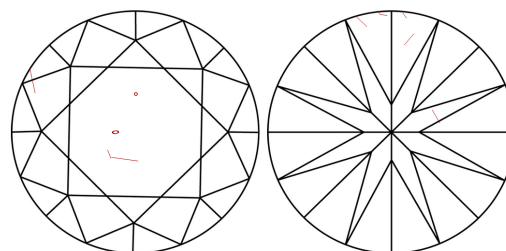
Polish **EXCELLENT**
Symmetry **EXCELLENT**
Fluorescence **NONE**
Inscription(s) **754512214**

PROPORTIONS



Sample Image Used

CLARITY CHARACTERISTICS



KEY TO SYMBOLS

Red symbols indicate internal characteristics.
Green symbols indicate external characteristics.

COLOR

D - F	G - J	K - M	N - R	S - Z	FANCY
Colorless	Near Colorless	Slightly Tinted	Very Light Color	Light Color	

CLARITY

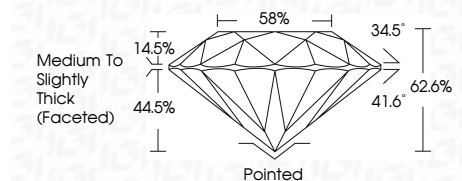
FL	IF	VVS ¹⁻²	VS ¹⁻²	SI ¹⁻²	I ¹⁻³
Flawless	Internally Flawless	Very Very Slightly Included	Very Slightly Included	Slightly Included	Included



May 23, 2026
IGI Report Number **754512214**
Description **NATURAL DIAMOND**
Shape and Cutting Style **ROUND BRILLIANT**
Measurements **7.97 - 8.03 X 5.01 MM**

GRADING RESULTS

Carat Weight **2.00 CARATS**
Color Grade **G**
Clarity Grade **SI 2**
Cut Grade **EXCELLENT**



ADDITIONAL GRADING INFORMATION

Polish **EXCELLENT**
Symmetry **EXCELLENT**
Fluorescence **NONE**
Inscription(s) **754512214**



IGI



May 23, 2026
IGI Report No 754512214
ROUND BRILLIANT
2.00 CARATS
Color Grade **G**
Clarity Grade **SI 2**
Depth **62.6%**
Table **58%**
Girdle **Medium To Slightly Thick (Faceted)**
Culet **Pointed**
Polish **EXCELLENT**
Symmetry **EXCELLENT**
Fluorescence **NONE**
Inscriptions(s) **754512214**