



ELECTRONIC COPY

754512212
Report verification at igi.org



May 23, 2026

IGI Report Number **754512212**

Description **NATURAL DIAMOND**

Shape and Cutting Style **EMERALD CUT**

Measurements **8.02 X 5.78 X 3.99 MM**

GRADING RESULTS

Carat Weight **1.70 CARAT**

Color Grade **G**

Clarity Grade **VS 1**

Cut Grade **VERY GOOD**

DIAMOND REPORT

May 23, 2026

IGI Report Number **754512212**

Description **NATURAL DIAMOND**

Shape and Cutting Style **EMERALD CUT**

Measurements **8.02 X 5.78 X 3.99 MM**

GRADING RESULTS

Carat Weight **1.70 CARAT**

Color Grade **G**

Clarity Grade **VS 1**

Cut Grade **VERY GOOD**

ADDITIONAL GRADING INFORMATION

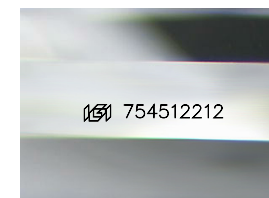
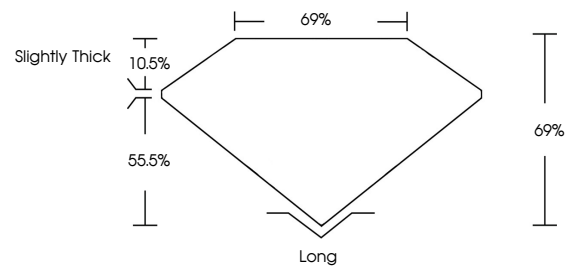
Polish **EXCELLENT**

Symmetry **EXCELLENT**

Fluorescence **NONE**

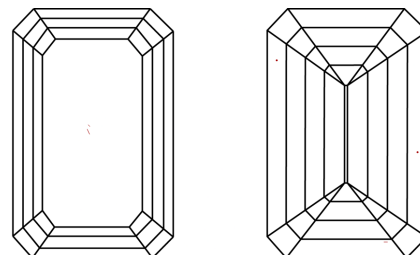
Inscription(s) **754512212**

PROPORTIONS



Sample Image Used

CLARITY CHARACTERISTICS



KEY TO SYMBOLS

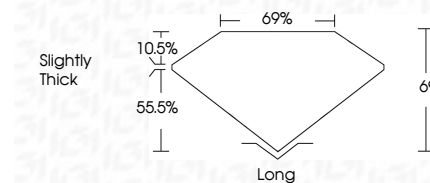
Red symbols indicate internal characteristics.
Green symbols indicate external characteristics.

COLOR

| D - F | G - J | K - M | N - R | S - Z | FANCY |
|-----------|----------------|-----------------|------------------|-------------|-------|
| Colorless | Near Colorless | Slightly Tinted | Very Light Color | Light Color | |

CLARITY

| FL | IF | VVS ¹⁻² | VS ¹⁻² | SI ¹⁻² | I ¹⁻³ |
|----------|---------------------|-----------------------------|------------------------|-------------------|------------------|
| Flawless | Internally Flawless | Very Very Slightly Included | Very Slightly Included | Slightly Included | Included |



ADDITIONAL GRADING INFORMATION

Polish **EXCELLENT**

Symmetry **EXCELLENT**

Fluorescence **NONE**

Inscription(s) **754512212**



IGI



| | | | | | | | |
|-------------------------|-------------|---------------|-----------|-------|--------|----------------|--------------|
| May 23, 2026 | 1.70 CARAT | G | VS 1 | 69% | 69% | Slightly Thick | Long |
| IGI Report No 754512212 | EMERALD CUT | Color Grade | Cut Grade | Depth | Table | Girdle | Polish |
| 8.02 X 5.78 X 3.99 MM | Color Grade | Clarity Grade | Cut Grade | Table | Girdle | Symmetry | Fluorescence |
| | 1.70 CARAT | VERY GOOD | VERY GOOD | 69% | 69% | EXCELLENT | NONE |
| | | | | | | EXCELLENT | NONE |
| | | | | | | | 754512212 |