



ELECTRONIC COPY

754512137
Report verification at igi.org



April 23, 2026

IGI Report Number **754512137**

Description **NATURAL DIAMOND**

Shape and Cutting Style **ROUND BRILLIANT**

Measurements **7.55 - 7.61 X 4.74 MM**

GRADING RESULTS

Carat Weight **1.70 CARAT**

Color Grade **G**

Clarity Grade **INTERNALLY FLAWLESS**

Cut Grade **EXCELLENT**

April 23, 2026

IGI Report Number **754512137**

Description **NATURAL DIAMOND**

Shape and Cutting Style **ROUND BRILLIANT**

Measurements **7.55 - 7.61 X 4.74 MM**

GRADING RESULTS

Carat Weight **1.70 CARAT**

Color Grade **G**

Clarity Grade **INTERNALLY FLAWLESS**

Cut Grade **EXCELLENT**

ADDITIONAL GRADING INFORMATION

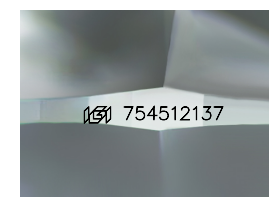
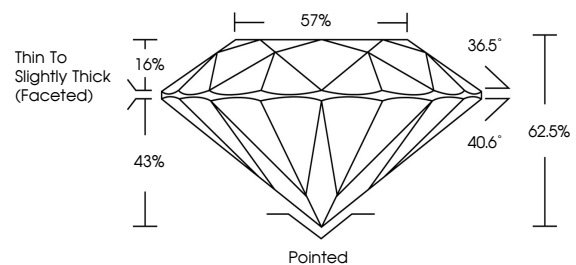
Polish **EXCELLENT**

Symmetry **EXCELLENT**

Fluorescence **NONE**

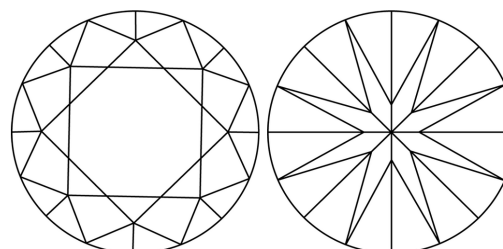
Inscription(s) **754512137**

PROPORTIONS



Sample Image Used

CLARITY CHARACTERISTICS



KEY TO SYMBOLS

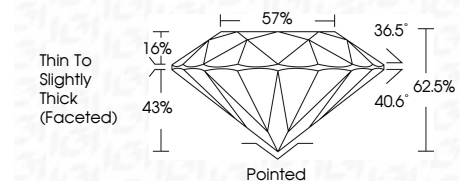
Red symbols indicate internal characteristics.
Green symbols indicate external characteristics.

COLOR

D - F	G - J	K - M	N - R	S - Z	FANCY
Colorless	Near Colorless	Slightly Tinted	Very Light Color	Light Color	

CLARITY

FL	IF	VVS ¹⁻²	VS ¹⁻²	SI ¹⁻²	I ¹⁻³
Flawless	Internally Flawless	Very Very Slightly Included	Very Slightly Included	Slightly Included	Included



ADDITIONAL GRADING INFORMATION

Polish **EXCELLENT**

Symmetry **EXCELLENT**

Fluorescence **NONE**

Inscription(s) **754512137**



IGI



April 23, 2026	IGI Report No 754512137	1.70 CARAT	G	IF	EXCELLENT	62.5%	36.5%	40.6%	Pointed	EXCELLENT	EXCELLENT	NONE	754512137
ROUND BRILLIANT	7.55 - 7.61 X 4.74 MM	Color Grade	Clarity Grade	Depth	Table	Girdle	Thin to Slightly Thick (Faceted)	Culet	Polish	Symmetry	Fluorescence	Inscription(s)	