



# INTERNATIONAL GEMOLOGICAL INSTITUTE

## DIAMOND REPORT

January 2, 2026

IGI Report Number

752565950

Description

NATURAL DIAMOND

Shape and Cutting Style

ROUND BRILLIANT

Measurements

6.13 - 6.21 X 3.84 MM

### GRADING RESULTS

Carat Weight

0.90 CARAT

Color Grade

K

Clarity Grade

SI 1

Cut Grade

EXCELLENT

### ADDITIONAL GRADING INFORMATION

Polish

EXCELLENT

Symmetry

EXCELLENT

Fluorescence

NONE

Identification Features

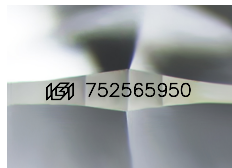
FEATHER, CRYSTAL, NEEDLE

Inscription(s)

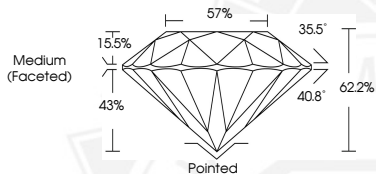
IGI 752565950

Comments: IDEAL CUT ROUND BRILLIANT

ELECTRONIC COPY



Sample Image Used



THIS DOCUMENT WAS PRODUCED WITH THE FOLLOWING SECURITY MEASURES: SPECIAL DOCUMENT PAPER, INK SCREENS, WATERMARK, BACKGROUND DESIGNS, HOLOGRAM AND OTHER SECURITY FEATURES NOT LISTED AND DO EXCEED DOCUMENT SECURITY INDUSTRY GUIDELINES.

For terms & conditions and to verify this report, please visit [www.igi.org](http://www.igi.org)



January 2, 2026

IGI Report Number 752565950

ROUND BRILLIANT

NATURAL DIAMOND

6.13 - 6.21 X 3.84 MM

Carat Weight 0.90 CARAT

Color Grade K

Clarity Grade SI 1

Cut Grade EXCELLENT

Polish EXCELLENT

Symmetry EXCELLENT

Fluorescence NONE

Inscription(s) IGI 752565950

Comments: IDEAL CUT ROUND

BRILLIANT



January 2, 2026

IGI Report Number 752565950

ROUND BRILLIANT

NATURAL DIAMOND

6.13 - 6.21 X 3.84 MM

Carat Weight 0.90 CARAT

Color Grade K

Clarity Grade SI 1

Cut Grade EXCELLENT

Polish EXCELLENT

Symmetry EXCELLENT

Fluorescence NONE

Inscription(s) IGI 752565950

Comments: IDEAL CUT ROUND

BRILLIANT