



# INTERNATIONAL GEMOLOGICAL INSTITUTE

## DIAMOND REPORT

December 30, 2025  
IGI Report Number  
Description  
Shape and Cutting Style  
Measurements

**752565349**  
**NATURAL DIAMOND**  
**ROUND BRILLIANT**  
**5.09 - 5.13 X 3.16 MM**

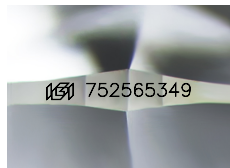
## GRADING RESULTS

Carat Weight **0.50 CARAT**  
Color Grade **G**  
Clarity Grade **VVS 1**  
Cut Grade **EXCELLENT**

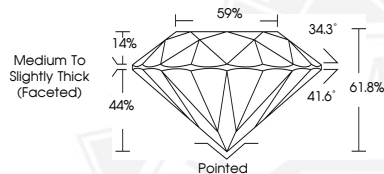
## ADDITIONAL GRADING INFORMATION

Polish **EXCELLENT**  
Symmetry **EXCELLENT**  
Fluorescence **VERY SLIGHT**  
Identification Features **PINPOINT**  
Inscription(s) **IGI 752565349**  
Comments: IDEAL CUT ROUND BRILLIANT

ELECTRONIC COPY



Sample Image Used



THIS DOCUMENT WAS PRODUCED WITH THE FOLLOWING SECURITY MEASURES: SPECIAL DOCUMENT PAPER, INK SCREENS, WATERMARK, BACKGROUND DESIGNS, HOLOGRAM AND OTHER SECURITY FEATURES NOT LISTED AND DO EXCEED DOCUMENT SECURITY INDUSTRY GUIDELINES.

For terms & conditions and to verify this report, please visit [www.igi.org](http://www.igi.org)



December 30, 2025

IGI Report Number **752565349**

**ROUND BRILLIANT**

**NATURAL DIAMOND**

**5.09 - 5.13 X 3.16 MM**

Carat Weight **0.50 CARAT**  
Color Grade **G**  
Clarity Grade **VVS 1**  
Cut Grade **EXCELLENT**  
Polish **EXCELLENT**  
Symmetry **EXCELLENT**  
Fluorescence **VERY SLIGHT**  
Inscription(s) **IGI 752565349**

Comments: IDEAL CUT ROUND  
BRILLIANT



December 30, 2025

IGI Report Number **752565349**

**ROUND BRILLIANT**

**NATURAL DIAMOND**

**5.09 - 5.13 X 3.16 MM**

Carat Weight **0.50 CARAT**  
Color Grade **G**  
Clarity Grade **VVS 1**  
Cut Grade **EXCELLENT**  
Polish **EXCELLENT**  
Symmetry **EXCELLENT**  
Fluorescence **VERY SLIGHT**  
Inscription(s) **IGI 752565349**

Comments: IDEAL CUT ROUND  
BRILLIANT