



# INTERNATIONAL GEMOLOGICAL INSTITUTE

## DIAMOND REPORT

December 27, 2025

IGI Report Number

752564856

Description

NATURAL DIAMOND

Shape and Cutting Style

ROUND BRILLIANT

Measurements

5.15 - 5.19 X 3.16 MM

### GRADING RESULTS

Carat Weight

0.51 CARAT

Color Grade

F

Clarity Grade

VVS 2

Cut Grade

EXCELLENT

### ADDITIONAL GRADING INFORMATION

Polish

EXCELLENT

Symmetry

EXCELLENT

Fluorescence

NONE

Identification Features

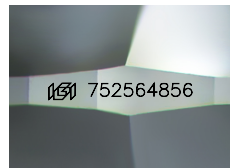
FEATHER, CLOUD

Inscription(s)

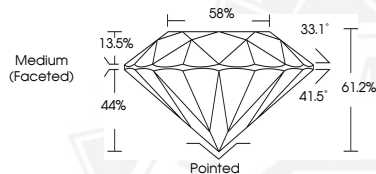
IGI 752564856

Comments: IDEAL CUT ROUND BRILLIANT

ELECTRONIC COPY



Sample Image Used



THIS DOCUMENT WAS PRODUCED WITH THE FOLLOWING SECURITY MEASURES: SPECIAL DOCUMENT PAPER, INK SCREENS, WATERMARK, BACKGROUND DESIGNS, HOLOGRAM AND OTHER SECURITY FEATURES NOT LISTED AND DO EXCEED DOCUMENT SECURITY INDUSTRY GUIDELINES.

For terms & conditions and to verify this report, please visit [www.igi.org](http://www.igi.org)



December 27, 2025

IGI Report Number 752564856

ROUND BRILLIANT

NATURAL DIAMOND

5.15 - 5.19 X 3.16 MM

Carat Weight

0.51 CARAT

Color Grade

F

Clarity Grade

VVS 2

Cut Grade

EXCELLENT

Polish

EXCELLENT

Symmetry

EXCELLENT

Fluorescence

NONE

Inscription(s)

IGI 752564856

Comments: IDEAL CUT ROUND

BRILLIANT



December 27, 2025

IGI Report Number 752564856

ROUND BRILLIANT

NATURAL DIAMOND

5.15 - 5.19 X 3.16 MM

Carat Weight

0.51 CARAT

Color Grade

F

Clarity Grade

VVS 2

Cut Grade

EXCELLENT

Polish

EXCELLENT

Symmetry

EXCELLENT

Fluorescence

NONE

Inscription(s)

IGI 752564856

Comments: IDEAL CUT ROUND

BRILLIANT