



INTERNATIONAL GEMOLOGICAL INSTITUTE

DIAMOND REPORT

December 24, 2025
IGI Report Number **752564562**
Description **NATURAL DIAMOND**
Shape and Cutting Style **ROUND BRILLIANT**
Measurements **5.61 - 5.65 X 3.56 MM**

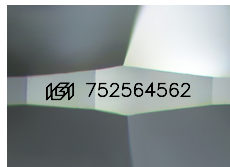
GRADING RESULTS

Carat Weight **0.70 CARAT**
Color Grade **J**
Clarity Grade **VVS 1**
Cut Grade **EXCELLENT**

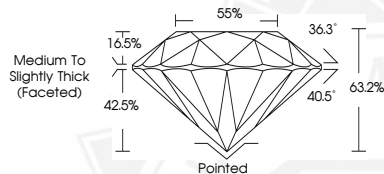
ADDITIONAL GRADING INFORMATION

Polish **EXCELLENT**
Symmetry **EXCELLENT**
Fluorescence **NONE**
Identification Features **INDENTED NATURAL CLOUD**
Inscription(s) **IGI 752564562**

ELECTRONIC COPY



Sample Image Used



THIS DOCUMENT WAS PRODUCED WITH THE FOLLOWING SECURITY MEASURES: SPECIAL DOCUMENT PAPER, INK SCREENS, WATERMARK, BACKGROUND DESIGNS, HOLOGRAM AND OTHER SECURITY FEATURES NOT LISTED AND DO EXCEED DOCUMENT SECURITY INDUSTRY GUIDELINES.

For terms & conditions and to verify this report, please visit www.igi.org



December 24, 2025

IGI Report Number **752564562**

ROUND BRILLIANT

NATURAL DIAMOND

5.61 - 5.65 X 3.56 MM

Carat Weight **0.70 CARAT**

Color Grade **J**

Clarity Grade **VVS 1**

Cut Grade **EXCELLENT**

Polish **EXCELLENT**

Symmetry **EXCELLENT**

Fluorescence **NONE**

Inscription(s) **IGI 752564562**



December 24, 2025

IGI Report Number **752564562**

ROUND BRILLIANT

NATURAL DIAMOND

5.61 - 5.65 X 3.56 MM

Carat Weight **0.70 CARAT**

Color Grade **J**

Clarity Grade **VVS 1**

Cut Grade **EXCELLENT**

Polish **EXCELLENT**

Symmetry **EXCELLENT**

Fluorescence **NONE**

Inscription(s) **IGI 752564562**