



INTERNATIONAL GEMOLOGICAL INSTITUTE

DIAMOND REPORT

December 22, 2025

IGI Report Number

752564071

Description

NATURAL DIAMOND

Shape and Cutting Style

ROUND BRILLIANT

Measurements

5.70 - 5.73 X 3.51 MM

GRADING RESULTS

Carat Weight

0.70 CARAT

Color Grade

K

Clarity Grade

VS 2

Cut Grade

EXCELLENT

ADDITIONAL GRADING INFORMATION

Polish

EXCELLENT

Symmetry

EXCELLENT

Fluorescence

NONE

Identification Features

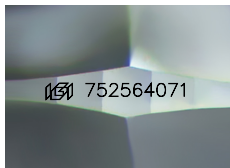
CRYSTAL, FEATHER, CLOUD

Inscription(s)

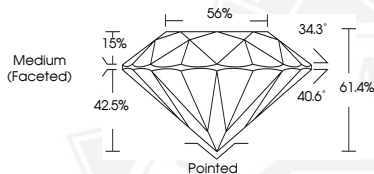
IGI 752564071

Comments: IDEAL CUT ROUND BRILLIANT

ELECTRONIC COPY



Sample Image Used



December 22, 2025

IGI Report Number 752564071

ROUND BRILLIANT

NATURAL DIAMOND

5.70 - 5.73 X 3.51 MM

Carat Weight 0.70 CARAT

Color Grade K

Clarity Grade VS 2

Cut Grade EXCELLENT

Polish EXCELLENT

Symmetry EXCELLENT

Fluorescence NONE

Inscription(s) IGI 752564071

Comments: IDEAL CUT ROUND

BRILLIANT



December 22, 2025

IGI Report Number 752564071

ROUND BRILLIANT

NATURAL DIAMOND

5.70 - 5.73 X 3.51 MM

Carat Weight 0.70 CARAT

Color Grade K

Clarity Grade VS 2

Cut Grade EXCELLENT

Polish EXCELLENT

Symmetry EXCELLENT

Fluorescence NONE

Inscription(s) IGI 752564071

Comments: IDEAL CUT ROUND

BRILLIANT



THIS DOCUMENT WAS PRODUCED WITH THE FOLLOWING SECURITY MEASURES: SPECIAL DOCUMENT PAPER, INK SCREENS, WATERMARK, BACKGROUND DESIGNS, HOLOGRAM AND OTHER SECURITY FEATURES NOT LISTED AND DO EXCEED DOCUMENT SECURITY INDUSTRY GUIDELINES.

For terms & conditions and to verify this report, please visit www.igi.org