



# INTERNATIONAL GEMOLOGICAL INSTITUTE

## DIAMOND REPORT

December 13, 2025  
IGI Report Number  
Description  
Shape and Cutting Style  
Measurements

**752563489**  
**NATURAL DIAMOND**  
**ROUND BRILLIANT**  
**5.91 - 5.95 X 3.72 MM**

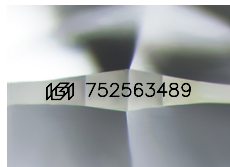
## GRADING RESULTS

Carat Weight **0.80 CARAT**  
Color Grade **G**  
Clarity Grade **VVS 2**  
Cut Grade **EXCELLENT**

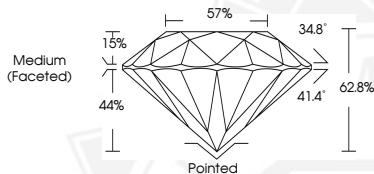
## ADDITIONAL GRADING INFORMATION

Polish **EXCELLENT**  
Symmetry **EXCELLENT**  
Fluorescence **NONE**  
Identification Features **FEATHER, CAVITY**  
Inscription(s) **(IGI) 752563489**

ELECTRONIC COPY



Sample Image Used



December 13, 2025

IGI Report Number **752563489**

**ROUND BRILLIANT**

**NATURAL DIAMOND**

**5.91 - 5.95 X 3.72 MM**

Carat Weight **0.80 CARAT**

Color Grade **G**

Clarity Grade **VVS 2**

Cut Grade **EXCELLENT**

Polish **EXCELLENT**

Symmetry **EXCELLENT**

Fluorescence **NONE**

Inscription(s) **(IGI) 752563489**



December 13, 2025

IGI Report Number **752563489**

**ROUND BRILLIANT**

**NATURAL DIAMOND**

**5.91 - 5.95 X 3.72 MM**

Carat Weight **0.80 CARAT**

Color Grade **G**

Clarity Grade **VVS 2**

Cut Grade **EXCELLENT**

Polish **EXCELLENT**

Symmetry **EXCELLENT**

Fluorescence **NONE**

Inscription(s) **(IGI) 752563489**



THIS DOCUMENT WAS PRODUCED WITH THE FOLLOWING SECURITY MEASURES: SPECIAL DOCUMENT PAPER, INK SCREENS, WATERMARK, BACKGROUND DESIGNS, HOLOGRAM AND OTHER SECURITY FEATURES NOT LISTED AND DO EXCEED DOCUMENT SECURITY INDUSTRY GUIDELINES.

For terms & conditions and to verify this report, please visit [www.igi.org](http://www.igi.org)