



# INTERNATIONAL GEMOLOGICAL INSTITUTE

## DIAMOND REPORT

December 8, 2025

IGI Report Number

752563050

Description

NATURAL DIAMOND

Shape and Cutting Style

CUT CORNERED RECTANGULAR MODIFIED  
BRILLIANT

Measurements

5.99 X 4.71 X 3.45 MM

### GRADING RESULTS

Carat Weight

0.90 CARAT

Color Grade

I

Clarity Grade

VVS 2

Cut Grade

VERY GOOD

### ADDITIONAL GRADING INFORMATION

Polish

EXCELLENT

Symmetry

EXCELLENT

Fluorescence

NONE

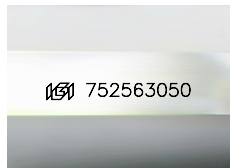
Identification Features

CRYSTAL, PINPOINT

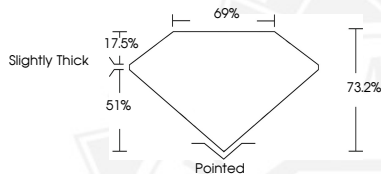
Inscription(s)

IGI 752563050

ELECTRONIC COPY



Sample Image Used



December 8, 2025

IGI Report Number 752563050

CUT CORNERED RECTANGULAR

MODIFIED BRILLIANT

NATURAL DIAMOND

5.99 X 4.71 X 3.45 MM

Carat Weight 0.90 CARAT

Color Grade I

Clarity Grade VVS 2

Cut Grade VERY GOOD

Polish EXCELLENT

Symmetry EXCELLENT

Fluorescence NONE

Inscription(s) IGI 752563050



December 8, 2025

IGI Report Number 752563050

CUT CORNERED RECTANGULAR

MODIFIED BRILLIANT

NATURAL DIAMOND

5.99 X 4.71 X 3.45 MM

Carat Weight 0.90 CARAT

Color Grade I

Clarity Grade VVS 2

Cut Grade VERY GOOD

Polish EXCELLENT

Symmetry EXCELLENT

Fluorescence NONE

Inscription(s) IGI 752563050



THIS DOCUMENT WAS PRODUCED WITH THE FOLLOWING SECURITY MEASURES: SPECIAL DOCUMENT PAPER, INK SCREENS, WATERMARK, BACKGROUND DESIGNS, HOLOGRAM AND OTHER SECURITY FEATURES NOT LISTED AND DO EXCEED DOCUMENT SECURITY INDUSTRY GUIDELINES.

For terms & conditions and to verify this report, please visit [www.igi.org](http://www.igi.org)