



ELECTRONIC COPY

DIAMOND REPORT

December 17, 2025	
IGI Report Number	752547734
Description	NATURAL DIAMOND
Shape and Cutting Style	PRINCESS CUT
Measurements	5.12 X 5.11 X 3.96 MM

GRADING RESULTS

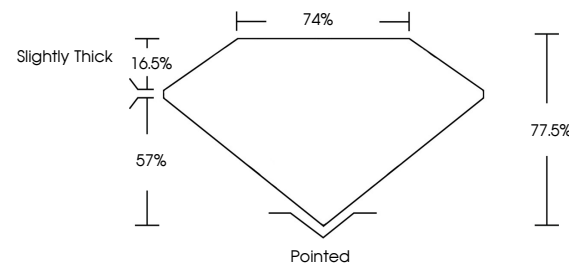
Carat Weight	1.01 CARAT
Color Grade	G
Clarity Grade	VS 2
Cut Grade	VERY GOOD

ADDITIONAL GRADING INFORMATION

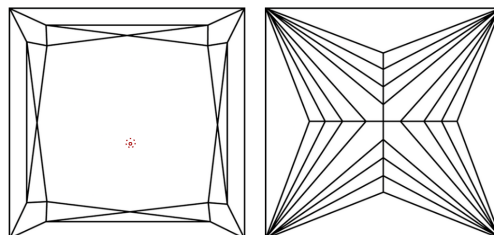
Polish	EXCELLENT
Symmetry	EXCELLENT
Fluorescence	NONE
Inscription(s)	131 752547734

752547734
Report verification at igi.org

PROPORTIONS

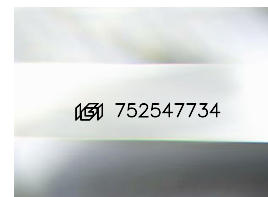


CLARITY CHARACTERISTICS



KEY TO SYMBOLS

Red symbols indicate internal characteristics.
Green symbols indicate external characteristics.



Sample Image Used

COLOR

D - F	G - J	K - M	N - R	S - Z	FANCY
Colorless	Near Colorless	Slightly Tinted	Very Light Color	Light Color	

CLARITY

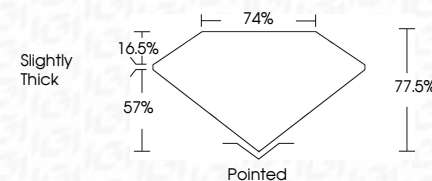
FL	IF	VVS ¹⁻²	VS ¹⁻²	SI ¹⁻²	I ¹⁻³
Flawless	Internally Flawless	Very Very Slightly Included	Very Slightly Included	Slightly Included	Included



December 17, 2025	
IGI Report Number	752547734
Description	NATURAL DIAMOND
Shape and Cutting Style	PRINCESS CUT
Measurements	5.12 X 5.11 X 3.96 MM

GRADING RESULTS

Carat Weight	1.01 CARAT
Color Grade	G
Clarity Grade	VS 2
Cut Grade	VERY GOOD



ADDITIONAL GRADING INFORMATION

Polish	EXCELLENT
Symmetry	EXCELLENT
Fluorescence	NONE
Inscription(s)	(16) 752547734



IG



© IGI 2020, International Gemological Institute

FD - 10 20



THIS DOCUMENT WAS PRODUCED WITH THE FOLLOWING SECURITY MEASURES: SPECIAL DOCUMENT PAPER, INK SCREENS, WATERMARK, BACKGROUND DESIGNS, HOLOGRAM AND OTHER SECURITY FEATURES NOT LISTED AND DO EXCEED DOCUMENT SECURITY INDUSTRY GUIDELINES

www.igi.org



December 17, 2025
GI Report No 752547734
PRINCESS CIT

5.12 X 5.11 X 3.96 MM

5.12 X 5.11 X 3.96 MM	1.01 CARAT
Carat Weight	
Color Grade	G

Clarity Grade	VS 2	VS 1	VS	V1	V2	V3	V4	V5	V6	V7	V8	V9	V10	V11	V12	V13	V14	V15	V16	V17	V18	V19	V20	V21	V22	V23	V24	V25	V26	V27	V28	V29	V30	V31	V32	V33	V34	V35	V36	V37	V38	V39	V40	V41	V42	V43	V44	V45	V46	V47	V48	V49	V50	V51	V52	V53	V54	V55	V56	V57	V58	V59	V60	V61	V62	V63	V64	V65	V66	V67	V68	V69	V70	V71	V72	V73	V74	V75	V76	V77	V78	V79	V80	V81	V82	V83	V84	V85	V86	V87	V88	V89	V90	V91	V92	V93	V94	V95	V96	V97	V98	V99	V100
Clarity Grade	VS 2	VS 1	VS	V1	V2	V3	V4	V5	V6	V7	V8	V9	V10	V11	V12	V13	V14	V15	V16	V17	V18	V19	V20	V21	V22	V23	V24	V25	V26	V27	V28	V29	V30	V31	V32	V33	V34	V35	V36	V37	V38	V39	V40	V41	V42	V43	V44	V45	V46	V47	V48	V49	V50	V51	V52	V53	V54	V55	V56	V57	V58	V59	V60	V61	V62	V63	V64	V65	V66	V67	V68	V69	V70	V71	V72	V73	V74	V75	V76	V77	V78	V79	V80	V81	V82	V83	V84	V85	V86	V87	V88	V89	V90	V91	V92	V93	V94	V95	V96	V97	V98	V99	V100

Clarity Grade	VS 2
Cut Grade	VERY GOOD
Depth	77.5%

Depth	77.5%
Table	74%

	74%
Table	
Girdle	

Cluster	Related
Cluster 1	
Cluster 2	
Cluster 3	
Cluster 4	
Cluster 5	
Cluster 6	
Cluster 7	
Cluster 8	
Cluster 9	
Cluster 10	
Cluster 11	
Cluster 12	
Cluster 13	
Cluster 14	
Cluster 15	
Cluster 16	
Cluster 17	
Cluster 18	
Cluster 19	
Cluster 20	
Cluster 21	
Cluster 22	
Cluster 23	
Cluster 24	
Cluster 25	
Cluster 26	
Cluster 27	
Cluster 28	
Cluster 29	
Cluster 30	
Cluster 31	
Cluster 32	
Cluster 33	
Cluster 34	
Cluster 35	
Cluster 36	
Cluster 37	
Cluster 38	
Cluster 39	
Cluster 40	
Cluster 41	
Cluster 42	
Cluster 43	
Cluster 44	
Cluster 45	
Cluster 46	
Cluster 47	
Cluster 48	
Cluster 49	
Cluster 50	
Cluster 51	
Cluster 52	
Cluster 53	
Cluster 54	
Cluster 55	
Cluster 56	
Cluster 57	
Cluster 58	
Cluster 59	
Cluster 60	
Cluster 61	
Cluster 62	
Cluster 63	
Cluster 64	
Cluster 65	
Cluster 66	
Cluster 67	
Cluster 68	
Cluster 69	
Cluster 70	
Cluster 71	
Cluster 72	
Cluster 73	
Cluster 74	
Cluster 75	
Cluster 76	
Cluster 77	
Cluster 78	
Cluster 79	
Cluster 80	
Cluster 81	
Cluster 82	
Cluster 83	
Cluster 84	
Cluster 85	
Cluster 86	
Cluster 87	
Cluster 88	
Cluster 89	
Cluster 90	
Cluster 91	
Cluster 92	
Cluster 93	
Cluster 94	
Cluster 95	
Cluster 96	
Cluster 97	
Cluster 98	
Cluster 99	
Cluster 100	

Culet	Pointed
Polish	EXCELLENT
Symmetry	EXCELLENT

Symmetry	EXCELLENT
Fluorescence	NONE
Inscription(s)	159 752547734

Inscription(s)