



**ELECTRONIC COPY**

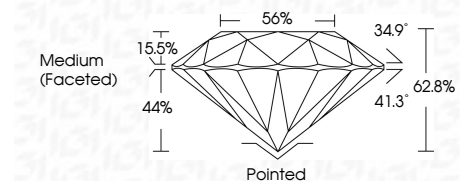
752547431  
Report verification at [igi.org](http://igi.org)



December 13, 2025  
IGI Report Number **752547431**  
Description **NATURAL DIAMOND**  
Shape and Cutting Style **ROUND BRILLIANT**  
Measurements **7.28 - 7.32 X 4.59 MM**

**GRADING RESULTS**

Carat Weight **1.50 CARAT**  
Color Grade **J**  
Clarity Grade **VVS 2**  
Cut Grade **EXCELLENT**



**ADDITIONAL GRADING INFORMATION**

Polish **EXCELLENT**  
Symmetry **EXCELLENT**  
Fluorescence **VERY SLIGHT**  
Inscription(s) **(IGI) 752547431**



**IGI**

December 13, 2025  
IGI Report No 752547431  
**ROUND BRILLIANT**  
1.50 CARAT  
J  
VVS 2  
EXCELLENT  
62.8%  
56%  
Medium (Faceted)  
Pointed  
EXCELLENT  
EXCELLENT  
VERY SLIGHT  
(IGI) 752547431

**DIAMOND REPORT**

December 13, 2025  
IGI Report Number **752547431**  
Description **NATURAL DIAMOND**  
Shape and Cutting Style **ROUND BRILLIANT**  
Measurements **7.28 - 7.32 X 4.59 MM**

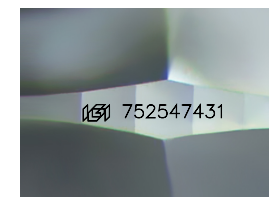
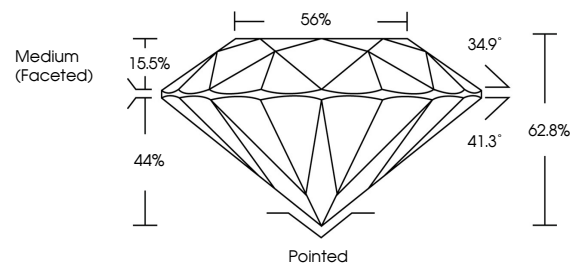
**GRADING RESULTS**

Carat Weight **1.50 CARAT**  
Color Grade **J**  
Clarity Grade **VVS 2**  
Cut Grade **EXCELLENT**

**ADDITIONAL GRADING INFORMATION**

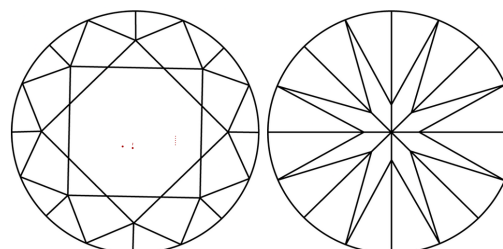
Polish **EXCELLENT**  
Symmetry **EXCELLENT**  
Fluorescence **VERY SLIGHT**  
Inscription(s) **(IGI) 752547431**

**PROPORTIONS**



Sample Image Used

**CLARITY CHARACTERISTICS**



**KEY TO SYMBOLS**

Red symbols indicate internal characteristics.  
Green symbols indicate external characteristics.

**COLOR**

D - F	G - J	K - M	N - R	S - Z	FANCY
Colorless	Near Colorless	Slightly Tinted	Very Light Color	Light Color	

**CLARITY**

FL	IF	VVS 1-2	VS 1-2	SI 1-2	I 1-3
Flawless	Internally Flawless	Very Very Slightly Included	Very Slightly Included	Slightly Included	Included

