



**ELECTRONIC COPY**

752547369  
Report verification at igi.org

**DIAMOND REPORT**

December 12, 2025  
IGI Report Number **752547369**  
Description **NATURAL DIAMOND**  
Shape and Cutting Style **EMERALD CUT**  
Measurements **7.95 X 5.64 X 3.96 MM**

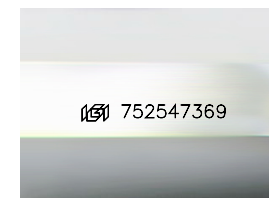
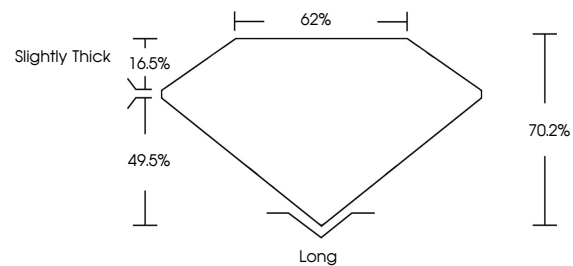
**GRADING RESULTS**

Carat Weight **1.81 CARAT**  
Color Grade **K**  
Clarity Grade **VS 1**  
Cut Grade **VERY GOOD**

**ADDITIONAL GRADING INFORMATION**

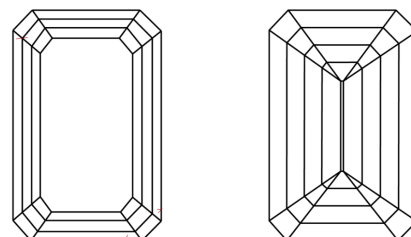
Polish **EXCELLENT**  
Symmetry **EXCELLENT**  
Fluorescence **NONE**  
Inscription(s) **752547369**

**PROPORTIONS**



Sample Image Used

**CLARITY CHARACTERISTICS**



**KEY TO SYMBOLS**

Red symbols indicate internal characteristics.  
Green symbols indicate external characteristics.

**COLOR**

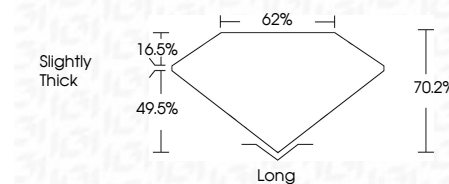
| D - F     | G - J          | K - M           | N - R            | S - Z       | FANCY |
|-----------|----------------|-----------------|------------------|-------------|-------|
| Colorless | Near Colorless | Slightly Tinted | Very Light Color | Light Color |       |

**CLARITY**

| FL       | IF                  | VVS <sup>1-2</sup>          | VS <sup>1-2</sup>      | SI <sup>1-2</sup> | I <sup>1-3</sup> |
|----------|---------------------|-----------------------------|------------------------|-------------------|------------------|
| Flawless | Internally Flawless | Very Very Slightly Included | Very Slightly Included | Slightly Included | Included         |



December 12, 2025  
IGI Report Number **752547369**  
Description **NATURAL DIAMOND**  
Shape and Cutting Style **EMERALD CUT**  
Measurements **7.95 X 5.64 X 3.96 MM**  
**GRADING RESULTS**  
Carat Weight **1.81 CARAT**  
Color Grade **K**  
Clarity Grade **VS 1**  
Cut Grade **VERY GOOD**



**ADDITIONAL GRADING INFORMATION**

Polish **EXCELLENT**  
Symmetry **EXCELLENT**  
Fluorescence **NONE**  
Inscription(s) **752547369**



**IGI**



December 12, 2025  
IGI Report No 752547369  
**EMERALD CUT**  
1.81 CARAT  
K  
1.81 CARAT  
K  
VS 1  
VERY GOOD  
7.95 X 5.64 X 3.96 MM  
70.2%  
62%  
Slightly Thick  
Long  
EXCELLENT  
EXCELLENT  
NONE  
752547369