



**ELECTRONIC COPY**

752547096  
Report verification at [igi.org](http://igi.org)

**DIAMOND REPORT**

December 9, 2025  
IGI Report Number **752547096**  
Description **NATURAL DIAMOND**  
Shape and Cutting Style **EMERALD CUT**  
Measurements **8.16 X 5.45 X 3.82 MM**

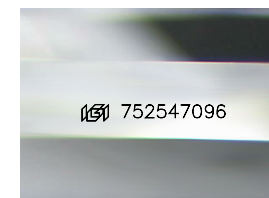
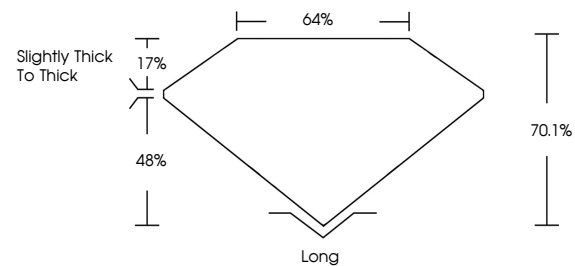
**GRADING RESULTS**

Carat Weight **1.71 CARAT**  
Color Grade **J**  
Clarity Grade **VVS 2**  
Cut Grade **VERY GOOD**

**ADDITIONAL GRADING INFORMATION**

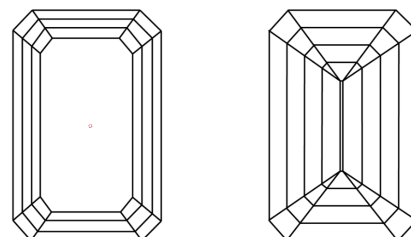
Polish **EXCELLENT**  
Symmetry **EXCELLENT**  
Fluorescence **VERY SLIGHT**  
Inscription(s) **752547096**

**PROPORTIONS**



Sample Image Used

**CLARITY CHARACTERISTICS**



**KEY TO SYMBOLS**

Red symbols indicate internal characteristics.  
Green symbols indicate external characteristics.

**COLOR**

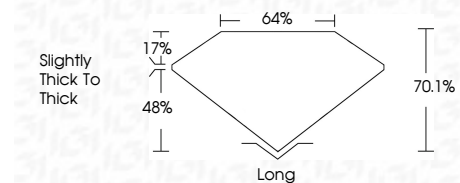
D - F	G - J	K - M	N - R	S - Z	FANCY
Colorless	Near Colorless	Slightly Tinted	Very Light Color	Light Color	

**CLARITY**

FL	IF	VVS <sup>1-2</sup>	VS <sup>1-2</sup>	SI <sup>1-2</sup>	I <sup>1-3</sup>
Flawless	Internally Flawless	Very Very Slightly Included	Very Slightly Included	Slightly Included	Included



December 9, 2025  
IGI Report Number **752547096**  
Description **NATURAL DIAMOND**  
Shape and Cutting Style **EMERALD CUT**  
Measurements **8.16 X 5.45 X 3.82 MM**  
**GRADING RESULTS**  
Carat Weight **1.71 CARAT**  
Color Grade **J**  
Clarity Grade **VVS 2**  
Cut Grade **VERY GOOD**



**ADDITIONAL GRADING INFORMATION**

Polish **EXCELLENT**  
Symmetry **EXCELLENT**  
Fluorescence **VERY SLIGHT**  
Inscription(s) **752547096**



**IGI**



December 9, 2025  
IGI Report No. 752547096  
**EMERALD CUT**  
8.16 X 5.45 X 3.82 MM  
Carat Weight **1.71 CARAT**  
Color Grade **J**  
Clarity Grade **VVS 2**  
Cut Grade **VERY GOOD**  
Depth **70.1%**  
Table **64%**  
Girdle **Slightly thick to thick**  
Culet **Long**  
Polish **EXCELLENT**  
Symmetry **EXCELLENT**  
Fluorescence **VERY SLIGHT**  
Inscription(s) **752547096**