



ELECTRONIC COPY

752538594
Report verification at igi.org



December 9, 2025
IGI Report Number **752538594**
Description **NATURAL DIAMOND**
Shape and Cutting Style **ROUND BRILLIANT**
Measurements **6.49 - 6.55 X 3.90 MM**
GRADING RESULTS
Carat Weight **1.01 CARAT**
Color Grade **H**
Clarity Grade **INTERNALLY FLAWLESS**
Cut Grade **EXCELLENT**

DIAMOND REPORT

December 9, 2025
IGI Report Number **752538594**
Description **NATURAL DIAMOND**
Shape and Cutting Style **ROUND BRILLIANT**
Measurements **6.49 - 6.55 X 3.90 MM**

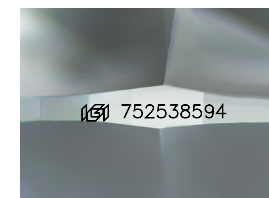
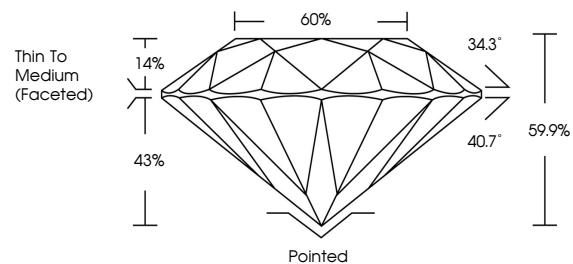
GRADING RESULTS

Carat Weight **1.01 CARAT**
Color Grade **H**
Clarity Grade **INTERNALLY FLAWLESS**
Cut Grade **EXCELLENT**

ADDITIONAL GRADING INFORMATION

Polish **EXCELLENT**
Symmetry **EXCELLENT**
Fluorescence **NONE**
Inscription(s) **752538594**
Comments: IDEAL CUT ROUND BRILLIANT

PROPORTIONS



Sample Image Used

CLARITY CHARACTERISTICS



KEY TO SYMBOLS

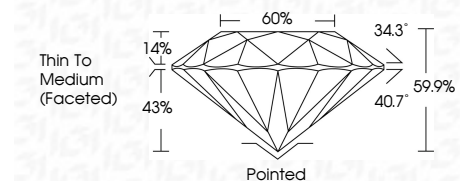
Red symbols indicate internal characteristics.
Green symbols indicate external characteristics.

COLOR

D - F	G - J	K - M	N - R	S - Z	FANCY
Colorless	Near Colorless	Slightly Tinted	Very Light Color	Light Color	

CLARITY

FL	IF	VVS ¹⁻²	VS ¹⁻²	SI ¹⁻²	I ¹⁻³
Flawless	Internally Flawless	Very Very Slightly Included	Very Slightly Included	Slightly Included	Included



ADDITIONAL GRADING INFORMATION

Polish **EXCELLENT**
Symmetry **EXCELLENT**
Fluorescence **NONE**
Inscription(s) **752538594**
Comments: IDEAL CUT ROUND BRILLIANT



IGI



December 9, 2025
IGI Report No. 752538594
ROUND BRILLIANT
6.49 - 6.55 X 3.90 MM
1.01 CARAT
H
Color Grade **EXCELLENT**
Clarity Grade **EXCELLENT**
Depth **60%**
Table **43%**
Crown Height **14%**
Total Depth **59.9%**
Thin To Medium (Faceted)
Culet **Pointed**
Polish **EXCELLENT**
Symmetry **EXCELLENT**
Fluorescence **NONE**
Inscription(s) **752538594**
Comments: **IDEAL CUT ROUND BRILLIANT**