



ELECTRONIC COPY

752536097
Report verification at igi.org



December 18, 2025
IGI Report Number **752536097**
Description **NATURAL DIAMOND**
Shape and Cutting Style **PRINCESS CUT**
Measurements **6.31 X 6.04 X 4.43 MM**
GRADING RESULTS
Carat Weight **1.50 CARAT**
Color Grade **G**
Clarity Grade **VVS 2**
Cut Grade **VERY GOOD**

DIAMOND REPORT

December 18, 2025
IGI Report Number **752536097**
Description **NATURAL DIAMOND**
Shape and Cutting Style **PRINCESS CUT**
Measurements **6.31 X 6.04 X 4.43 MM**

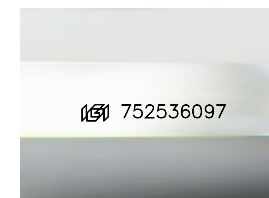
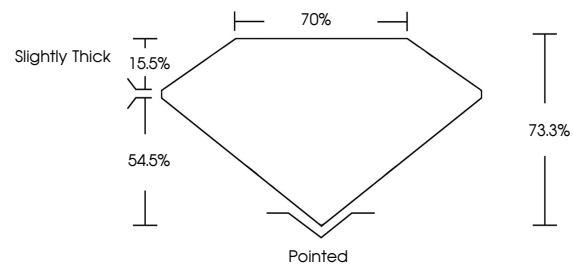
GRADING RESULTS

Carat Weight **1.50 CARAT**
Color Grade **G**
Clarity Grade **VVS 2**
Cut Grade **VERY GOOD**

ADDITIONAL GRADING INFORMATION

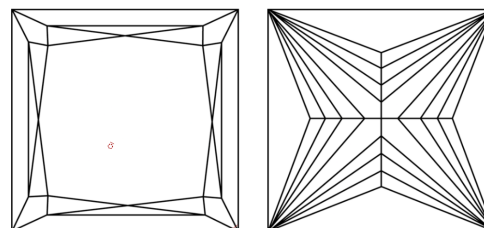
Polish **EXCELLENT**
Symmetry **EXCELLENT**
Fluorescence **NONE**
Inscription(s) **752536097**

PROPORTIONS



Sample Image Used

CLARITY CHARACTERISTICS



KEY TO SYMBOLS

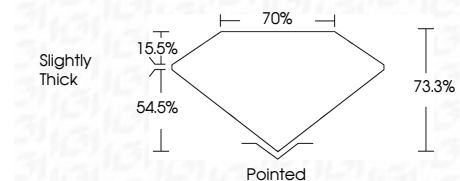
Red symbols indicate internal characteristics.
Green symbols indicate external characteristics.

COLOR

D - F	G - J	K - M	N - R	S - Z	FANCY
Colorless	Near Colorless	Slightly Tinted	Very Light Color	Light Color	

CLARITY

FL	IF	VVS ¹⁻²	VS ¹⁻²	SI ¹⁻²	I ¹⁻³
Flawless	Internally Flawless	Very Very Slightly Included	Very Slightly Included	Slightly Included	Included



ADDITIONAL GRADING INFORMATION

Polish **EXCELLENT**
Symmetry **EXCELLENT**
Fluorescence **NONE**
Inscription(s) **752536097**



IGI



December 18, 2025	1.50 CARAT	G	VVS 2	73.3%	70%	Slightly Thick	Pointed	EXCELLENT	EXCELLENT	NONE	752536097
IGI Report No 752536097	Carat Weight	Color Grade	Clarity Grade	Depth	Table	Graile	Culet	Polish	Symmetry	Fluorescence	Inscriptions(s)
PRINCESS CUT	6.31 X 6.04 X 4.43 MM	VERY GOOD	70%	Slightly Thick	Pointed	EXCELLENT	EXCELLENT	NONE	752536097		