



ELECTRONIC COPY

752535971
Report verification at igi.org



December 30, 2025
IGI Report Number **752535971**
Description **NATURAL DIAMOND**
Shape and Cutting Style **ROUND BRILLIANT**
Measurements **7.18 - 7.26 X 4.58 MM**

GRADING RESULTS

Carat Weight **1.50 CARAT**
Color Grade **L**
Clarity Grade **SI 1**
Cut Grade **EXCELLENT**

DIAMOND REPORT

December 30, 2025
IGI Report Number **752535971**
Description **NATURAL DIAMOND**
Shape and Cutting Style **ROUND BRILLIANT**
Measurements **7.18 - 7.26 X 4.58 MM**

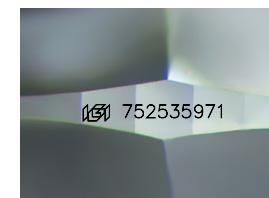
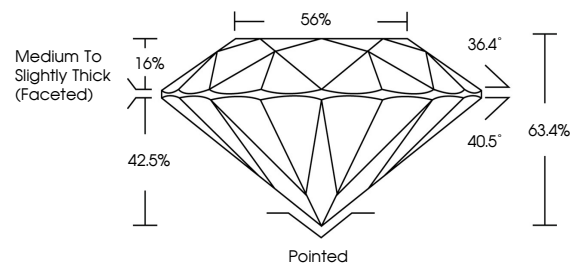
GRADING RESULTS

Carat Weight **1.50 CARAT**
Color Grade **L**
Clarity Grade **SI 1**
Cut Grade **EXCELLENT**

ADDITIONAL GRADING INFORMATION

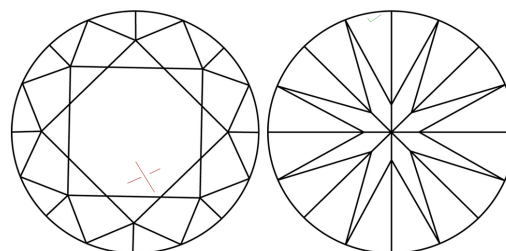
Polish **EXCELLENT**
Symmetry **EXCELLENT**
Fluorescence **NONE**
Inscription(s) **752535971**

PROPORTIONS



Sample Image Used

CLARITY CHARACTERISTICS



KEY TO SYMBOLS

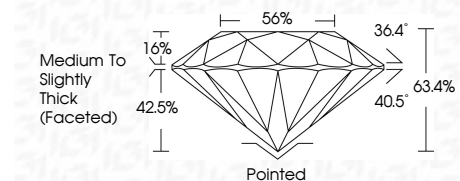
Red symbols indicate internal characteristics.
Green symbols indicate external characteristics.

COLOR

D - F	G - J	K - M	N - R	S - Z	FANCY
Colorless	Near Colorless	Slightly Tinted	Very Light Color	Light Color	

CLARITY

FL	IF	VVS ¹⁻²	VS ¹⁻²	SI ¹⁻²	I ¹⁻³
Flawless	Internally Flawless	Very Very Slightly Included	Very Slightly Included	Slightly Included	Included



ADDITIONAL GRADING INFORMATION

Polish **EXCELLENT**
Symmetry **EXCELLENT**
Fluorescence **NONE**
Inscription(s) **752535971**



IGI



December 30, 2025
IGI Report No 752535971
ROUND BRILLIANT
1.50 CARAT
L
SI 1
EXCELLENT
63.4%
56%
Medium To Slightly Thick (Faceted)
Pointed
EXCELLENT
EXCELLENT
NONE
IGI 752535971