



ELECTRONIC COPY

752535926
Report verification at igi.org



December 17, 2025
IGI Report Number **752535926**
Description **NATURAL DIAMOND**
Shape and Cutting Style **EMERALD CUT**
Measurements **7.85 X 5.64 X 3.81 MM**
GRADING RESULTS
Carat Weight **1.70 CARAT**
Color Grade **L**
Clarity Grade **VS 1**
Cut Grade **VERY GOOD**

DIAMOND REPORT

December 17, 2025
IGI Report Number **752535926**
Description **NATURAL DIAMOND**
Shape and Cutting Style **EMERALD CUT**
Measurements **7.85 X 5.64 X 3.81 MM**

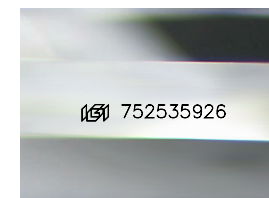
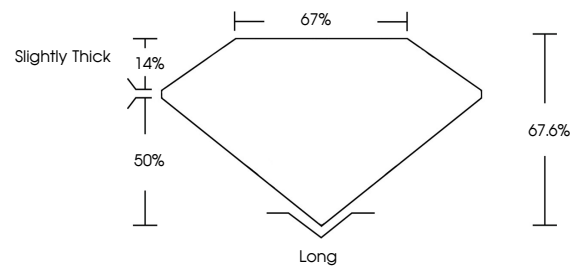
GRADING RESULTS

Carat Weight **1.70 CARAT**
Color Grade **L**
Clarity Grade **VS 1**
Cut Grade **VERY GOOD**

ADDITIONAL GRADING INFORMATION

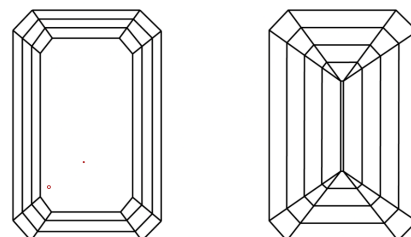
Polish **EXCELLENT**
Symmetry **EXCELLENT**
Fluorescence **VERY SLIGHT**
Inscription(s) **752535926**

PROPORTIONS



Sample Image Used

CLARITY CHARACTERISTICS



KEY TO SYMBOLS

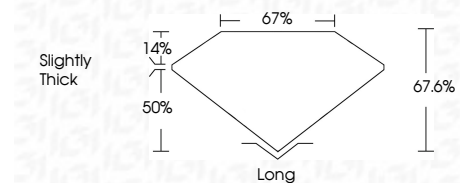
Red symbols indicate internal characteristics.
Green symbols indicate external characteristics.

COLOR

D - F	G - J	K - M	N - R	S - Z	FANCY
Colorless	Near Colorless	Slightly Tinted	Very Light Color	Light Color	

CLARITY

FL	IF	VVS ¹⁻²	VS ¹⁻²	SI ¹⁻²	I ¹⁻³
Flawless	Internally Flawless	Very Very Slightly Included	Very Slightly Included	Slightly Included	Included



ADDITIONAL GRADING INFORMATION

Polish **EXCELLENT**
Symmetry **EXCELLENT**
Fluorescence **VERY SLIGHT**
Inscription(s) **752535926**



IGI



December 17, 2025
IGI Report No. **752535926**
EMERALD CUT
1.70 CARAT
L
VS 1
VERY GOOD
67.6%
67%
Slightly Thick
Long
EXCELLENT
EXCELLENT
VERY SLIGHT
VERY SLIGHT
IGI 752535926