



INTERNATIONAL GEMOLOGICAL INSTITUTE

DIAMOND REPORT

December 12, 2025
IGI Report Number **752529506**
Description **NATURAL DIAMOND**
Shape and Cutting Style **ROUND BRILLIANT**
Measurements **5.19 - 5.20 X 3.11 MM**

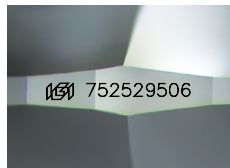
GRADING RESULTS

Carat Weight **0.50 CARAT**
Color Grade **J**
Clarity Grade **VVS 2**
Cut Grade **EXCELLENT**

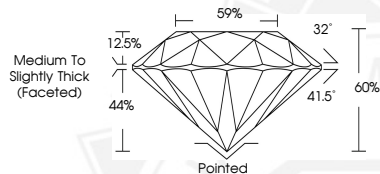
ADDITIONAL GRADING INFORMATION

Polish **EXCELLENT**
Symmetry **EXCELLENT**
Fluorescence **SLIGHT**
Identification Features **FEATHER, CRYSTAL, NEEDLE**
Inscription(s) **(IGI) 752529506**

ELECTRONIC COPY



Sample Image Used



December 12, 2025

IGI Report Number **752529506**

ROUND BRILLIANT

NATURAL DIAMOND

5.19 - 5.20 X 3.11 MM

Carat Weight **0.50 CARAT**

Color Grade **J**

Clarity Grade **VVS 2**

Cut Grade **EXCELLENT**

Polish **EXCELLENT**

Symmetry **EXCELLENT**

Fluorescence **SLIGHT**

Inscription(s) **(IGI) 752529506**



December 12, 2025

IGI Report Number **752529506**

ROUND BRILLIANT

NATURAL DIAMOND

5.19 - 5.20 X 3.11 MM

Carat Weight **0.50 CARAT**

Color Grade **J**

Clarity Grade **VVS 2**

Cut Grade **EXCELLENT**

Polish **EXCELLENT**

Symmetry **EXCELLENT**

Fluorescence **SLIGHT**

Inscription(s) **(IGI) 752529506**



THIS DOCUMENT WAS PRODUCED WITH THE FOLLOWING SECURITY MEASURES: SPECIAL DOCUMENT PAPER, INK SCREENS, WATERMARK, BACKGROUND DESIGNS, HOLOGRAM AND OTHER SECURITY FEATURES NOT LISTED AND DO EXCEED DOCUMENT SECURITY INDUSTRY GUIDELINES.

For terms & conditions and to verify this report, please visit www.igi.org