



ELECTRONIC COPY

DIAMOND REPORT

December 31, 2025	
IGI Report Number	750593811
Description	NATURAL DIAMOND
Shape and Cutting Style	ROUND BRILLIANT
Measurements	6.12 - 6.17 X 3.79 MM

GRADING RESULTS

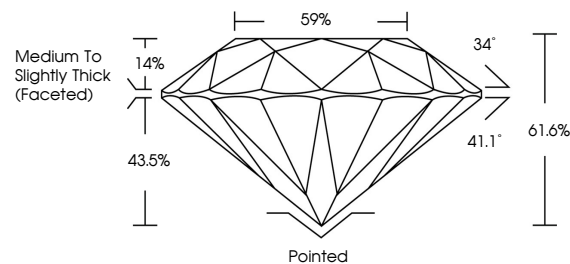
Carat Weight	0.90 CARAT
Color Grade	I
Clarity Grade	SI 2
Cut Grade	EXCELLENT

ADDITIONAL GRADING INFORMATION

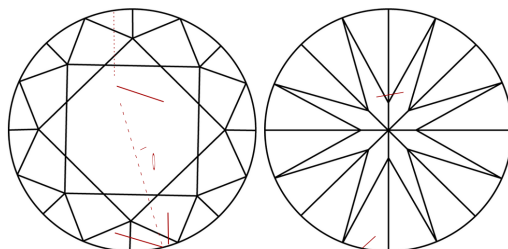
Polish	EXCELLENT
Symmetry	EXCELLENT
Fluorescence	NONE
Inscription(s)	131 750593811

750593811
Report verification at igi.org

PROPORTIONS

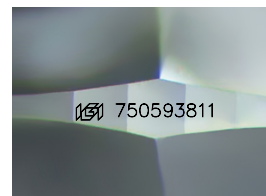


CLARITY CHARACTERISTICS



KEY TO SYMBOLS

Red symbols indicate internal characteristics.
Green symbols indicate external characteristics.



Sample Image Used

COLOR

D - F	G - J	K - M	N - R	S - Z	FANCY
Colorless	Near Colorless	Slightly Tinted	Very Light Color	Light Color	

CLARITY

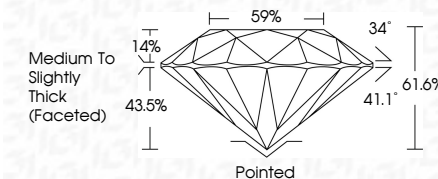
FL	IF	VVS ¹⁻²	VS ¹⁻²	SI ¹⁻²	I ¹⁻³
Flawless	Internally Flawless	Very Very Slightly Included	Very Slightly Included	Slightly Included	Included



December 31, 2025	
IGI Report Number	750593811
Description	NATURAL DIAMOND
Shape and Cutting Style	ROUND BRILLIANT
Measurements	6.12 - 6.17 X 3.79 MM

GRADING RESULTS

Carat Weight	0.90 CARAT
Color Grade	I
Clarity Grade	SI 2
Cut Grade	EXCELLENT



ADDITIONAL GRADING INFORMATION

Polish	EXCELLENT
Symmetry	EXCELLENT
Fluorescence	NONE
Inscription(s)	(15) 750593811



© IGI 2020, International Gemological Institute

FD - 10 20



THIS DOCUMENT WAS PRODUCED WITH THE FOLLOWING SECURITY MEASURES: SPECIAL DOCUMENT PAPER, INK SCREENS, WATERMARK, BACKGROUND DESIGNS, HOLOGRAM AND OTHER SECURITY FEATURES NOT LISTED AND DO EXCEED DOCUMENT SECURITY INDUSTRY GUIDELINES

December 31, 2025
IGI Report No 750593811
ROUND BRILLIANT

6.12 - 6.17 X 3.79 MM		0.90 CARAT
Carat Weight	\$12	
Color Grade	EXCELLENT	
Clarity Grade	61.6%	
Cut Grade	59%	
Depth	Medium to Slightly Thick (Faceted)	
Table		
Gra		
Culet	Poished	
Polish	EXCELLENT	
Symmetry	EXCELLENT	
Fluorescence	NONE	
Inscriptions(s)		See #75952881