



# INTERNATIONAL GEMOLOGICAL INSTITUTE

## DIAMOND REPORT

December 2, 2025  
IGI Report Number **750579158**  
Description **NATURAL DIAMOND**  
Shape and Cutting Style **ROUND BRILLIANT**  
Measurements **4.78 - 4.81 X 2.83 MM**

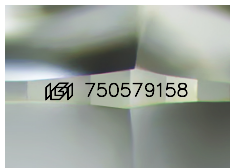
### GRADING RESULTS

Carat Weight **0.40 CARAT**  
Color Grade **F**  
Clarity Grade **VS 2**  
Cut Grade **EXCELLENT**

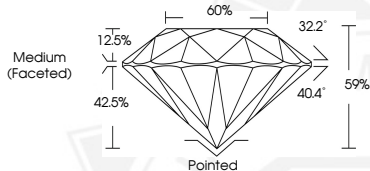
### ADDITIONAL GRADING INFORMATION

Polish **VERY GOOD**  
Symmetry **EXCELLENT**  
Fluorescence **STRONG**  
Identification Features **FEATHER, CRYSTAL CLOUD**  
Inscription(s) **(G) 750579158**

ELECTRONIC COPY



Sample Image Used



December 2, 2025

IGI Report Number **750579158**

**ROUND BRILLIANT**

**NATURAL DIAMOND**

**4.78 - 4.81 X 2.83 MM**

Carat Weight **0.40 CARAT**

Color Grade **F**

Clarity Grade **VS 2**

Cut Grade **EXCELLENT**

Polish **VERY GOOD**

Symmetry **EXCELLENT**

Fluorescence **STRONG**

Inscription(s) **(G) 750579158**



December 2, 2025

IGI Report Number **750579158**

**ROUND BRILLIANT**

**NATURAL DIAMOND**

**4.78 - 4.81 X 2.83 MM**

Carat Weight **0.40 CARAT**

Color Grade **F**

Clarity Grade **VS 2**

Cut Grade **EXCELLENT**

Polish **VERY GOOD**

Symmetry **EXCELLENT**

Fluorescence **STRONG**

Inscription(s) **(G) 750579158**



THIS DOCUMENT WAS PRODUCED WITH THE FOLLOWING SECURITY MEASURES: SPECIAL DOCUMENT PAPER, INK SCREENS, WATERMARK, BACKGROUND DESIGNS, HOLOGRAM AND OTHER SECURITY FEATURES NOT LISTED AND DO EXCEED DOCUMENT SECURITY INDUSTRY GUIDELINES.

For terms & conditions and to verify this report, please visit [www.igi.org](http://www.igi.org)