

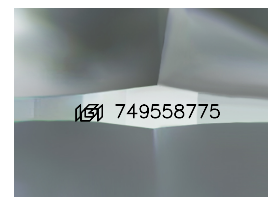
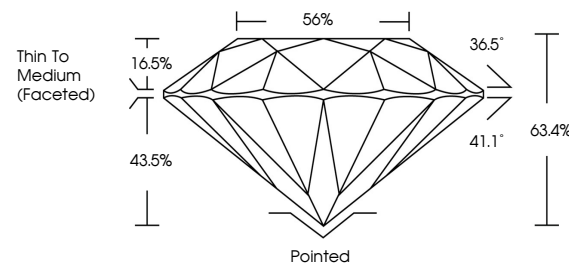


ELECTRONIC COPY

DIAMOND REPORT

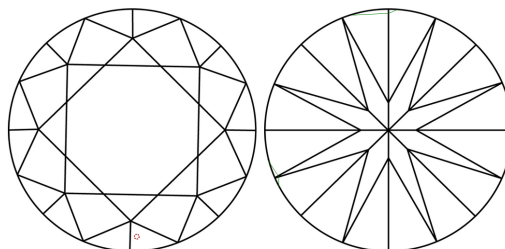
749558775
Report verification at igi.org

PROPORTIONS



Sample Image Used

CLARITY CHARACTERISTICS



KEY TO SYMBOLS

Red symbols indicate internal characteristics.
Green symbols indicate external characteristics.

COLOR

D - F	G - J	K - M	N - R	S - Z	FANCY
Colorless	Near Colorless	Slightly Tinted	Very Light Color	Light Color	

CLARITY

FL	IF	VVS ¹⁻²	VS ¹⁻²	SI ¹⁻²	I ¹⁻³
Flawless	Internally Flawless	Very Very Slightly Included	Very Slightly Included	Slightly Included	Included



January 19, 2026

IGI Report Number **749558775**

Description	NATURAL DIAMOND
-------------	-----------------

Shape and Cutting Style **ROUND BRILLIANT**

Measurements 6.73 - 6.77 X 4.28 MM

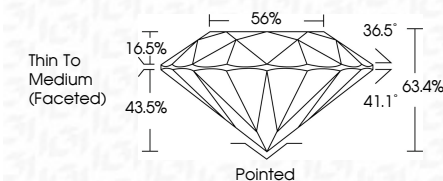
GRADING RESULTS

Carat Weight **1.20 CARAT**

Color Grade H

Clarity Grade **VVS 2**

Cut Grade **EXCELLENT**



ADDITIONAL GRADING INFORMATION

Polish **EXCELLENCE**Symmetry **EXCELLEN**

Fluorescence NONI

Inscription(s) 74955877

© IGI 2020, International Gemological Institute

FD - 10 20



THIS DOCUMENT WAS PRODUCED WITH THE FOLLOWING SECURITY MEASURES: SPECIAL DOCUMENT PAPER, INK SCREENS, WATERMARK, BACKGROUND DESIGNS, HOLOGRAM AND OTHER SECURITY FEATURES NOT LISTED AND DO EXCEED DOCUMENT SECURITY INDUSTRY GUIDELINES

January 19, 2026
GI Report No 749558775
ROUND BRILLIANT

1.20 CARAT	VVS 2	EXCELLENT	63.4%	56%	Thin To Medium (faceted)	Pointed	EXCELLENT	NONE	See Zappalaweb.com
1.20 CARAT	VVS 2	EXCELLENT	63.4%	56%	Thin To Medium (faceted)	Pointed	EXCELLENT	NONE	See Zappalaweb.com