



ELECTRONIC COPY

749558536
Report verification at igi.org



January 2, 2026
IGI Report Number **749558536**
Description **NATURAL DIAMOND**
Shape and Cutting Style **ROUND BRILLIANT**
Measurements **11.68 - 11.74 X 7.25 MM**
GRADING RESULTS
Carat Weight **6.15 CARATS**
Color Grade **J**
Clarity Grade **INTERNALLY FLAWLESS**
Cut Grade **EXCELLENT**

DIAMOND REPORT

January 2, 2026
IGI Report Number **749558536**
Description **NATURAL DIAMOND**
Shape and Cutting Style **ROUND BRILLIANT**
Measurements **11.68 - 11.74 X 7.25 MM**

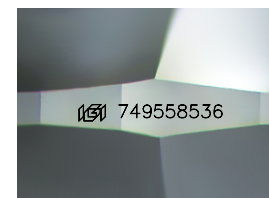
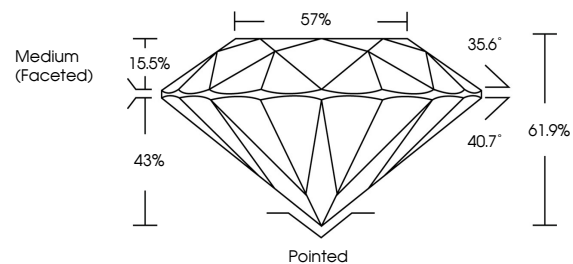
GRADING RESULTS

Carat Weight **6.15 CARATS**
Color Grade **J**
Clarity Grade **INTERNALLY FLAWLESS**
Cut Grade **EXCELLENT**

ADDITIONAL GRADING INFORMATION

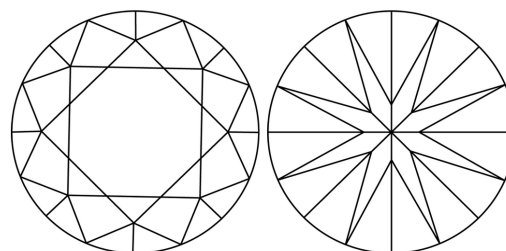
Polish **EXCELLENT**
Symmetry **EXCELLENT**
Fluorescence **NONE**
Inscription(s) **749558536**
Comments: IDEAL CUT ROUND BRILLIANT

PROPORTIONS



Sample Image Used

CLARITY CHARACTERISTICS



KEY TO SYMBOLS

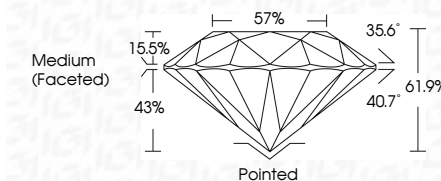
Red symbols indicate internal characteristics.
Green symbols indicate external characteristics.

COLOR

D - F	G - J	K - M	N - R	S - Z	FANCY
Colorless	Near Colorless	Slightly Tinted	Very Light Color	Light Color	

CLARITY

FL	IF	VVS ¹⁻²	VS ¹⁻²	SI ¹⁻²	I ¹⁻³
Flawless	Internally Flawless	Very Very Slightly Included	Very Slightly Included	Slightly Included	Included



ADDITIONAL GRADING INFORMATION

Polish **EXCELLENT**
Symmetry **EXCELLENT**
Fluorescence **NONE**
Inscription(s) **749558536**
Comments: IDEAL CUT ROUND BRILLIANT



IGI



January 2, 2026
IGI Report No **749558536**
ROUND BRILLIANT
11.68 - 11.74 X 7.25 MM
Carat Weight **6.15 CARATS**
Color Grade **J**
Clarity Grade **IF**
Depth **EXCELLENT**
Table **61.9%**
Girdle **57%**
Medium (Faceted)
Culet **Pointed**
Polish **EXCELLENT**
Symmetry **EXCELLENT**
Fluorescence **NONE**
Inscription(s) **749558536**
Comments: **IDEAL CUT ROUND BRILLIANT**