



ELECTRONIC COPY

DIAMOND REPORT

December 17, 2025	
IGI Report Number	749558452
Description	NATURAL DIAMOND
Shape and Cutting Style	ROUND BRILLIANT
Measurements	6.51 - 6.58 X 3.99 MM

GRADING RESULTS

Carat Weight	1.03 CARAT
Color Grade	D
Clarity Grade	INTERNALLY FLAWLESS
Cut Grade	EXCELLENT

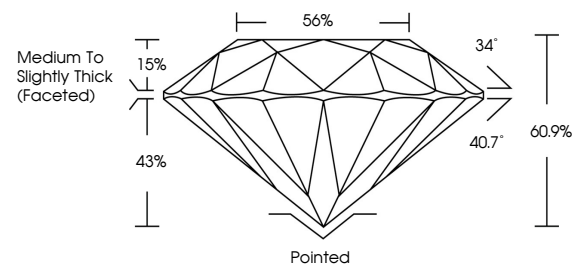
ADDITIONAL GRADING INFORMATION

Polish	EXCELLENT
Symmetry	EXCELLENT
Fluorescence	NONE
Inscription(s)	151 749558452

Comments: HEARTS & ARROWS
IDEAL CUT ROUND BRILLIANT

749558452
Report verification at [igi.org](https://www.igi.org)

PROPORTIONS



CLARITY CHARACTERISTICS

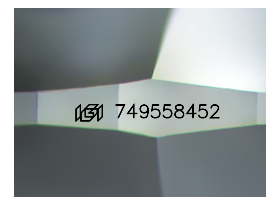


KEY TO SYMBOLS

Red symbols indicate internal characteristics.
Green symbols indicate external characteristics.



www.igi.org



Sample Image Used

COLOR

D - F	G - J	K - M	N - R	S - Z	FANCY
Colorless	Near Colorless	Slightly Tinted	Very Light Color	Light Color	

CLARITY

FL	IF	VVS ¹⁻²	VS ¹⁻²	SI ¹⁻²	I ¹⁻³
Flawless	Internally Flawless	Very Very Slightly Included	Very Slightly Included	Slightly Included	Included



© IGI 2020, International Gemological Institute

FD - 10 20



THIS DOCUMENT WAS PRODUCED WITH THE FOLLOWING SECURITY MEASURES: SPECIAL DOCUMENT PAPER, INK SCREENS, WATERMARK, BACKGROUND DESIGNS, HOLOGRAM AND OTHER SECURITY FEATURES NOT LISTED AND DO EXCEED DOCUMENT SECURITY INDUSTRY GUIDELINE

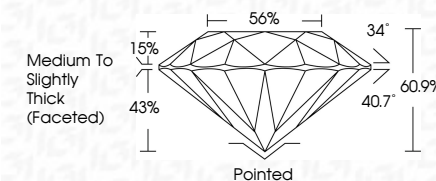
DIAMOND REPORT



December 17, 2025	
IGI Report Number	749558452
Description	NATURAL DIAMOND
Shape and Cutting Style	ROUND BRILLIANT
Measurements	6.51 - 6.58 X 3.99 MM

GRADING RESULTS

Carat Weight	1.03 CARAT
Color Grade	D
Clarity Grade	INTERNALLY FLAWLESS
Cut Grade	EXCELLENT



ADDITIONAL GRADING INFORMATION

Polish	EXCELLENT
Symmetry	EXCELLENT
Fluorescence	NONE
Inscription(s)	 749558452
Comments: HEARTS & ARROWS IDEAL CUT ROUND BRILLIANT	



December 17, 2025
IGI Report No 749558452
ROUND BRILLIANT

1.51 - 1.68 X 5.95 MM	Carat Weight	1.08 CARAT
	Color Grade	D
	Clarity Grade	IF
	Cut Grade	EXCELLENT
	Depth	60.9%
	Table	56%
	Girdle	Medium to Slightly Thick (Faceted)
	Culet	Pointed
	Polish	EXCELLENT
	Symmetry	EXCELLENT
	Fluorescence	NONE
	Measurements	6.50 X 7.50 X 4.50

Comments:
HEARTS & ARROWS
IDEAL CUT POLISHED BRILLIANT