



ELECTRONIC COPY

749535489
Report verification at igi.org

DIAMOND REPORT

December 5, 2025
IGI Report Number **749535489**
Description **NATURAL DIAMOND**
Shape and Cutting Style **SQUARE EMERALD CUT**
Measurements **5.29 X 5.17 X 3.88 MM**

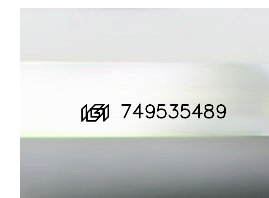
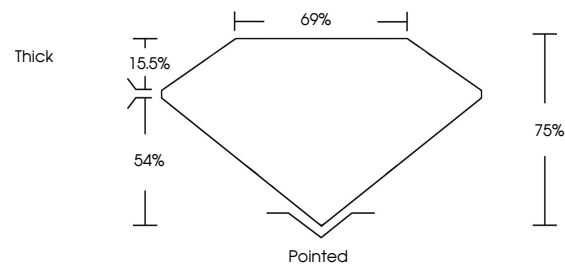
GRADING RESULTS

Carat Weight **1.01 CARAT**
Color Grade **I**
Clarity Grade **VVS 2**
Cut Grade **VERY GOOD**

ADDITIONAL GRADING INFORMATION

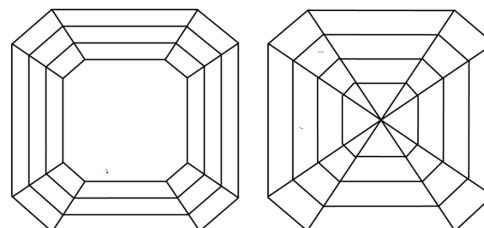
Polish **EXCELLENT**
Symmetry **EXCELLENT**
Fluorescence **NONE**
Inscription(s) **749535489**

PROPORTIONS



Sample Image Used

CLARITY CHARACTERISTICS



KEY TO SYMBOLS

Red symbols indicate internal characteristics.
Green symbols indicate external characteristics.

COLOR

D - F	G - J	K - M	N - R	S - Z	FANCY
Colorless	Near Colorless	Slightly Tinted	Very Light Color	Light Color	

CLARITY

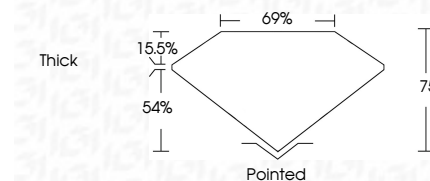
FL	IF	VVS ¹⁻²	VS ¹⁻²	SI ¹⁻²	I ¹⁻³
Flawless	Internally Flawless	Very Very Slightly Included	Very Slightly Included	Slightly Included	Included



December 5, 2025
IGI Report Number **749535489**
Description **NATURAL DIAMOND**
Shape and Cutting Style **SQUARE EMERALD CUT**
Measurements **5.29 X 5.17 X 3.88 MM**

GRADING RESULTS

Carat Weight **1.01 CARAT**
Color Grade **I**
Clarity Grade **VVS 2**
Cut Grade **VERY GOOD**



ADDITIONAL GRADING INFORMATION

Polish **EXCELLENT**
Symmetry **EXCELLENT**
Fluorescence **NONE**
Inscription(s) **749535489**



IGI



December 5, 2025
IGI Report No. 749535489
SQUARE EMERALD CUT
5.29 X 5.17 X 3.88 MM
1.01 CARAT
I
VVS 2
VERY GOOD
75%
69%
Thick
Pointed
EXCELLENT
EXCELLENT
NONE
NONE
IGI 749535489