



ELECTRONIC COPY

749535422
Report verification at igi.org

DIAMOND REPORT

December 8, 2025
IGI Report Number **749535422**
Description **NATURAL DIAMOND**
Shape and Cutting Style **EMERALD CUT**
Measurements **7.90 X 5.41 X 3.66 MM**

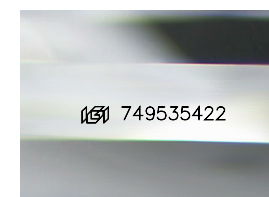
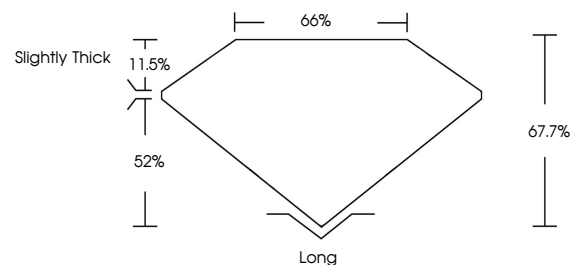
GRADING RESULTS

Carat Weight **1.53 CARAT**
Color Grade **J**
Clarity Grade **VVS 1**
Cut Grade **VERY GOOD**

ADDITIONAL GRADING INFORMATION

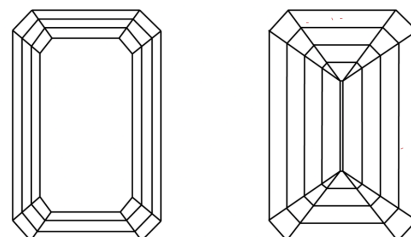
Polish **EXCELLENT**
Symmetry **EXCELLENT**
Fluorescence **VERY SLIGHT**
Inscription(s) **749535422**

PROPORTIONS



Sample Image Used

CLARITY CHARACTERISTICS



KEY TO SYMBOLS

Red symbols indicate internal characteristics.
Green symbols indicate external characteristics.

COLOR

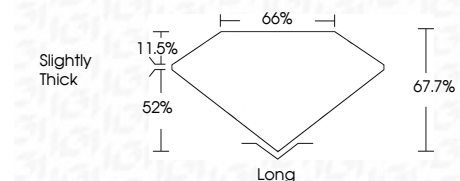
D - F	G - J	K - M	N - R	S - Z	FANCY
Colorless	Near Colorless	Slightly Tinted	Very Light Color	Light Color	

CLARITY

FL	IF	VVS ¹⁻²	VS ¹⁻²	SI ¹⁻²	I ¹⁻³
Flawless	Internally Flawless	Very Very Slightly Included	Very Slightly Included	Slightly Included	Included



December 8, 2025
IGI Report Number **749535422**
Description **NATURAL DIAMOND**
Shape and Cutting Style **EMERALD CUT**
Measurements **7.90 X 5.41 X 3.66 MM**
GRADING RESULTS
Carat Weight **1.53 CARAT**
Color Grade **J**
Clarity Grade **VVS 1**
Cut Grade **VERY GOOD**



ADDITIONAL GRADING INFORMATION

Polish **EXCELLENT**
Symmetry **EXCELLENT**
Fluorescence **VERY SLIGHT**
Inscription(s) **749535422**



December 8, 2025
IGI Report No. 749535422
EMERALD CUT

1.53 CARAT
Color Grade **J**
Clarity Grade **VVS 1**
Depth **67.7%**
Table **66%**
Girdle **Slightly Thick**

Long
Polish **EXCELLENT**
Symmetry **EXCELLENT**
Fluorescence **VERY SLIGHT**
Inscription(s) **749535422**