



ELECTRONIC COPY

DIAMOND REPORT

December 3, 2025	
IGI Report Number	749535309
Description	NATURAL DIAMOND
Shape and Cutting Style	CUT CORNERED RECTANGULAR MODIFIED BRILLIANT
Measurements	6.32 X 4.87 X 3.55 MM

GRADING RESULTS

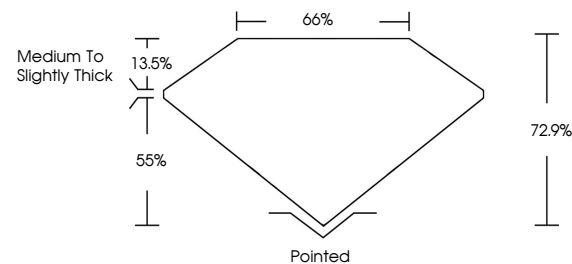
Carat Weight	1.00 CARAT
Color Grade	G
Clarity Grade	SI 2
Cut Grade	VERY GOOD

ADDITIONAL GRADING INFORMATION

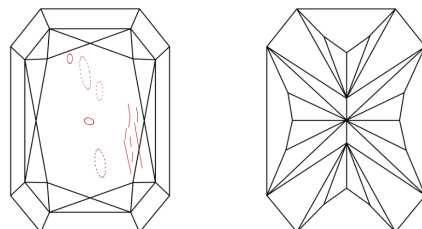
Polish	EXCELLENT
Symmetry	EXCELLENT
Fluorescence	NONE
Inscription(s)	 749535309

749535309
Report verification at igi.org

PROPORTIONS

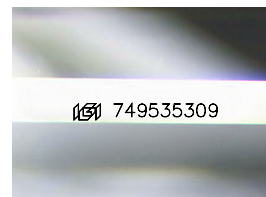


CLARITY CHARACTERISTICS



KEY TO SYMBOLS

Red symbols indicate internal characteristics.
Green symbols indicate external characteristics.



Sample Image Used

COLOR

D - F	G - J	K - M	N - R	S - Z	FANCY
Colorless	Near Colorless	Slightly Tinted	Very Light Color	Light Color	

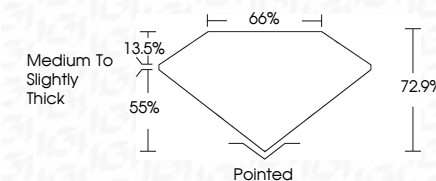
CLARITY

FL	IF	VVS ¹⁻²	VS ¹⁻²	SI ¹⁻²	I ¹⁻³
Flawless	Internally Flawless	Very Very Slightly Included	Very Slightly Included	Slightly Included	Included

DIAMOND REPORT



December 3, 2025	
IGI Report Number	749535309
Description	NATURAL DIAMOND
Shape and Cutting Style	CUT CORNERED RECTANGULAR MODIFIED BRILLIANT
Measurements	6.32 X 4.87 X 3.55 MM
GRADING RESULTS	
Carat Weight	1.00 CARAT
Color Grade	G
Clarity Grade	SI 2
Cut Grade	VERY GOOD



ADDITIONAL GRADING INFORMATION

Polish	EXCELLENT
Symmetry	EXCELLENT
Fluorescence	NONE
Inscription(s)	1151 749535309



IG



© IGI 2020, International Gemological Institute

FD - 10 20



THIS DOCUMENT WAS PRODUCED WITH THE FOLLOWING SECURITY MEASURES: SPECIAL DOCUMENT PAPER, INK SCREENS, WATERMARK, BACKGROUND DESIGNS, HOLOGRAM AND OTHER SECURITY FEATURES NOT LISTED AND DO EXCEED DOCUMENT SECURITY INDUSTRY GUIDELINES

www.igi.org

December 3, 2025

GI Report No 749535309
CUT CORNERED RECT. MODIFIED BRILLIANT

5.32 X 4.87 X 3.55 MM

Carat Weight	1.00 CARAT
Color Grade	

Classify Grade	Color Grade
----------------	-------------

Cut Grade

VERY GOOD

Depth	72.9%
Table	66%

Girdle

1116

Polished	Excellent
Polish	

Symmetry	EXCELLENT
Balance	NONE

Inscription(s)