



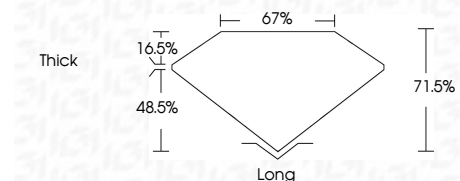
**ELECTRONIC COPY**

749535203  
Report verification at [igi.org](http://igi.org)



December 1, 2025  
IGI Report Number **749535203**  
Description **NATURAL DIAMOND**  
Shape and Cutting Style **EMERALD CUT**  
Measurements **7.08 X 5.13 X 3.67 MM**

**GRADING RESULTS**  
Carat Weight **1.32 CARAT**  
Color Grade **I**  
Clarity Grade **VVS 1**  
Cut Grade **VERY GOOD**



**ADDITIONAL GRADING INFORMATION**  
Polish **EXCELLENT**  
Symmetry **EXCELLENT**  
Fluorescence **VERY SLIGHT**  
Inscription(s) **IGI 749535203**



December 1, 2025  
IGI Report No. 749535203  
**EMERALD CUT**  
7.08 X 5.13 X 3.67 MM  
1.32 CARAT  
I  
VVS 1  
VERY GOOD  
71.05%  
67%  
Thick  
Long  
EXCELLENT  
EXCELLENT  
VERY SLIGHT  
IGI 749535203

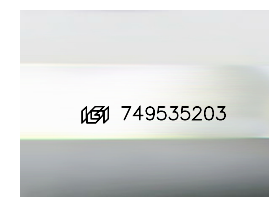
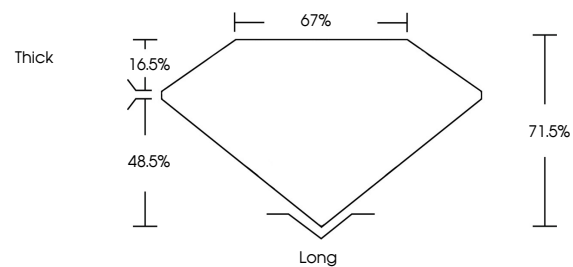
**DIAMOND REPORT**

December 1, 2025  
IGI Report Number **749535203**  
Description **NATURAL DIAMOND**  
Shape and Cutting Style **EMERALD CUT**  
Measurements **7.08 X 5.13 X 3.67 MM**

**GRADING RESULTS**  
Carat Weight **1.32 CARAT**  
Color Grade **I**  
Clarity Grade **VVS 1**  
Cut Grade **VERY GOOD**

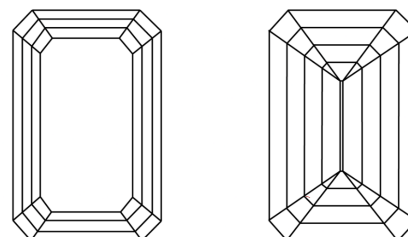
**ADDITIONAL GRADING INFORMATION**  
Polish **EXCELLENT**  
Symmetry **EXCELLENT**  
Fluorescence **VERY SLIGHT**  
Inscription(s) **IGI 749535203**

**PROPORTIONS**



Sample Image Used

**CLARITY CHARACTERISTICS**



**KEY TO SYMBOLS**

Red symbols indicate internal characteristics.  
Green symbols indicate external characteristics.

**COLOR**

D - F	G - J	K - M	N - R	S - Z	FANCY
Colorless	Near Colorless	Slightly Tinted	Very Light Color	Light Color	

**CLARITY**

FL	IF	VVS <sup>1-2</sup>	VS <sup>1-2</sup>	SI <sup>1-2</sup>	I <sup>1-3</sup>
Flawless	Internally Flawless	Very Very Slightly Included	Very Slightly Included	Slightly Included	Included

