



**ELECTRONIC COPY**

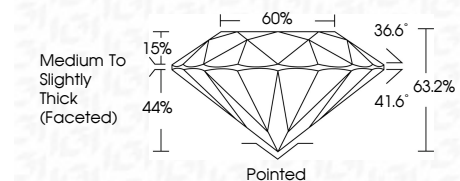
749535191  
Report verification at igi.org



December 1, 2025  
IGI Report Number **749535191**  
Description **NATURAL DIAMOND**  
Shape and Cutting Style **ROUND BRILLIANT**  
Measurements **6.88 - 6.93 X 4.37 MM**

**GRADING RESULTS**

Carat Weight **1.31 CARAT**  
Color Grade **I**  
Clarity Grade **VS 1**  
Cut Grade **EXCELLENT**



**ADDITIONAL GRADING INFORMATION**

Polish **EXCELLENT**  
Symmetry **EXCELLENT**  
Fluorescence **VERY SLIGHT**  
Inscription(s) **IGI 749535191**



**IGI**

December 1, 2025  
IGI Report No 749535191  
**ROUND BRILLIANT**  
6.88 - 6.93 X 4.37 MM  
1.31 CARAT  
I  
EXCELLENT  
VS 1  
EXCELLENT  
63.2%  
60%  
Medium To Slightly Thick (Faceted)  
Pointed  
EXCELLENT  
EXCELLENT  
VERY SLIGHT  
IGI 749535191

**DIAMOND REPORT**

December 1, 2025  
IGI Report Number **749535191**  
Description **NATURAL DIAMOND**  
Shape and Cutting Style **ROUND BRILLIANT**  
Measurements **6.88 - 6.93 X 4.37 MM**

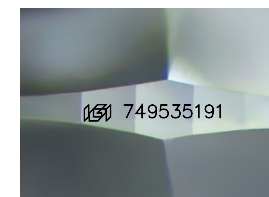
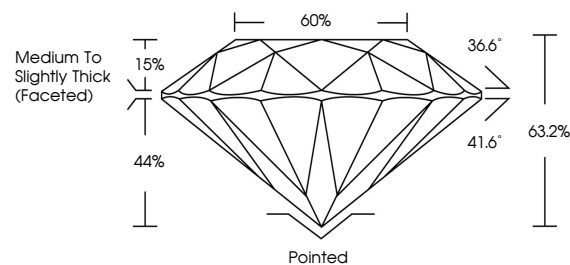
**GRADING RESULTS**

Carat Weight **1.31 CARAT**  
Color Grade **I**  
Clarity Grade **VS 1**  
Cut Grade **EXCELLENT**

**ADDITIONAL GRADING INFORMATION**

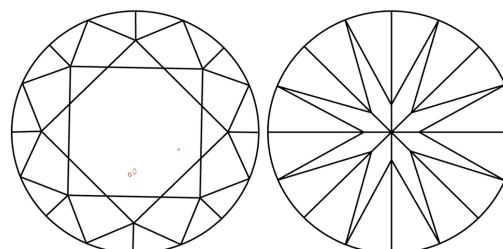
Polish **EXCELLENT**  
Symmetry **EXCELLENT**  
Fluorescence **VERY SLIGHT**  
Inscription(s) **IGI 749535191**

**PROPORTIONS**



Sample Image Used

**CLARITY CHARACTERISTICS**



**KEY TO SYMBOLS**

Red symbols indicate internal characteristics.  
Green symbols indicate external characteristics.

**COLOR**

D - F	G - J	K - M	N - R	S - Z	FANCY
Colorless	Near Colorless	Slightly Tinted	Very Light Color	Light Color	

**CLARITY**

FL	IF	VVS 1-2	VS 1-2	SI 1-2	I 1-3
Flawless	Internally Flawless	Very Very Slightly Included	Very Slightly Included	Slightly Included	Included

