



**ELECTRONIC COPY**

749535170  
Report verification at [igi.org](http://igi.org)



January 24, 2026  
IGI Report Number **749535170**  
Description **NATURAL DIAMOND**  
Shape and Cutting Style **EMERALD CUT**  
Measurements **6.41 X 4.62 X 3.29 MM**  
**GRADING RESULTS**  
Carat Weight **1.01 CARAT**  
Color Grade **I**  
Clarity Grade **SI 1**  
Cut Grade **VERY GOOD**

**DIAMOND REPORT**

January 24, 2026  
IGI Report Number **749535170**  
Description **NATURAL DIAMOND**  
Shape and Cutting Style **EMERALD CUT**  
Measurements **6.41 X 4.62 X 3.29 MM**

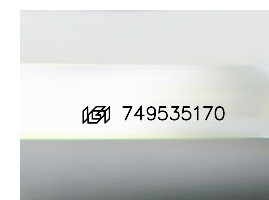
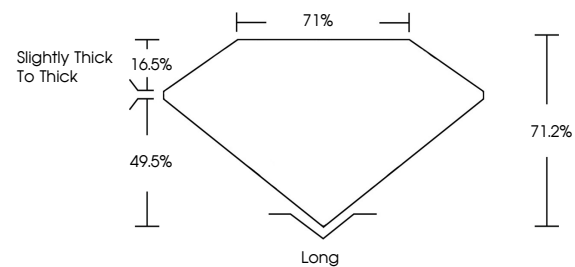
**GRADING RESULTS**

Carat Weight **1.01 CARAT**  
Color Grade **I**  
Clarity Grade **SI 1**  
Cut Grade **VERY GOOD**

**ADDITIONAL GRADING INFORMATION**

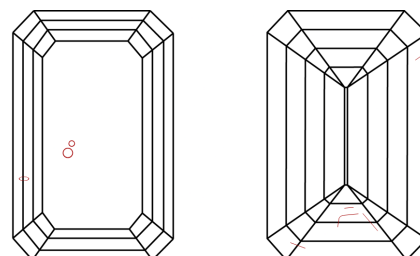
Polish **EXCELLENT**  
Symmetry **EXCELLENT**  
Fluorescence **NONE**  
Inscription(s) **749535170**

**PROPORTIONS**



Sample Image Used

**CLARITY CHARACTERISTICS**



**KEY TO SYMBOLS**

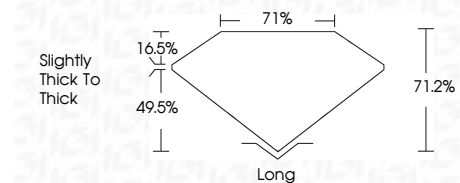
Red symbols indicate internal characteristics.  
Green symbols indicate external characteristics.

**COLOR**

D - F	G - J	K - M	N - R	S - Z	FANCY
Colorless	Near Colorless	Slightly Tinted	Very Light Color	Light Color	

**CLARITY**

FL	IF	VVS <sup>1-2</sup>	VS <sup>1-2</sup>	SI <sup>1-2</sup>	I <sup>1-3</sup>
Flawless	Internally Flawless	Very Very Slightly Included	Very Slightly Included	Slightly Included	Included



**ADDITIONAL GRADING INFORMATION**

Polish **EXCELLENT**  
Symmetry **EXCELLENT**  
Fluorescence **NONE**  
Inscription(s) **749535170**



**IGI**



January 24, 2026  
IGI Report No 749535170  
**EMERALD CUT**  
6.41 X 4.62 X 3.29 MM  
1.01 CARAT  
I  
SI 1  
VERY GOOD  
71.2%  
71%  
Slightly thick to thick  
Long  
EXCELLENT  
EXCELLENT  
NONE  
NONE  
749535170