



ELECTRONIC COPY

749535156
Report verification at igi.org



December 30, 2025
IGI Report Number **749535156**
Description **NATURAL DIAMOND**
Shape and Cutting Style **EMERALD CUT**
Measurements **6.59 X 4.72 X 3.30 MM**
GRADING RESULTS
Carat Weight **1.00 CARAT**
Color Grade **H**
Clarity Grade **SI 1**
Cut Grade **VERY GOOD**

DIAMOND REPORT

December 30, 2025
IGI Report Number **749535156**
Description **NATURAL DIAMOND**
Shape and Cutting Style **EMERALD CUT**
Measurements **6.59 X 4.72 X 3.30 MM**

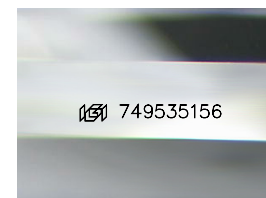
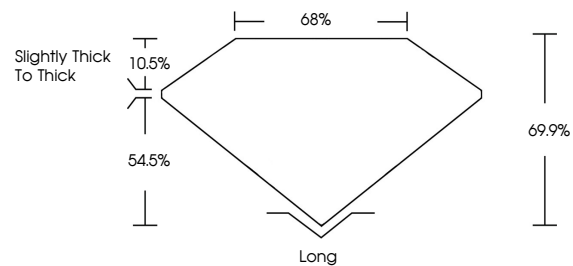
GRADING RESULTS

Carat Weight **1.00 CARAT**
Color Grade **H**
Clarity Grade **SI 1**
Cut Grade **VERY GOOD**

ADDITIONAL GRADING INFORMATION

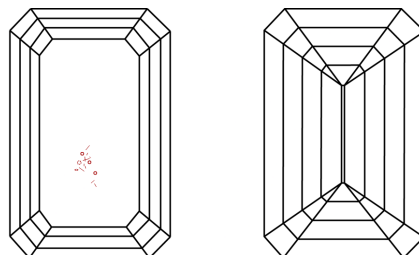
Polish **EXCELLENT**
Symmetry **EXCELLENT**
Fluorescence **NONE**
Inscription(s) **749535156**

PROPORTIONS



Sample Image Used

CLARITY CHARACTERISTICS



KEY TO SYMBOLS

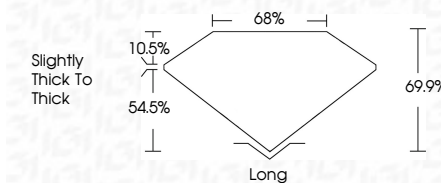
Red symbols indicate internal characteristics.
Green symbols indicate external characteristics.

COLOR

D - F	G - J	K - M	N - R	S - Z	FANCY
Colorless	Near Colorless	Slightly Tinted	Very Light Color	Light Color	

CLARITY

FL	IF	VVS ¹⁻²	VS ¹⁻²	SI ¹⁻²	I ¹⁻³
Flawless	Internally Flawless	Very Very Slightly Included	Very Slightly Included	Slightly Included	Included



ADDITIONAL GRADING INFORMATION

Polish **EXCELLENT**
Symmetry **EXCELLENT**
Fluorescence **NONE**
Inscription(s) **749535156**



IGI



December 30, 2025
IGI Report No 749535156
EMERALD CUT
6.59 X 4.72 X 3.30 MM
1.00 CARAT
H
SI 1
VERY GOOD
69.9%
68%
Slightly Thick to Thick
Long
EXCELLENT
EXCELLENT
NONE
NONE
749535156