



**ELECTRONIC COPY**

749504377  
Report verification at [igi.org](http://igi.org)



January 8, 2026  
IGI Report Number **749504377**  
Description **NATURAL DIAMOND**  
Shape and Cutting Style **ROUND BRILLIANT**  
Measurements **6.57 - 6.61 X 3.97 MM**

**GRADING RESULTS**

Carat Weight **1.04 CARAT**  
Color Grade **G**  
Clarity Grade **VVS 1**  
Cut Grade **EXCELLENT**

**DIAMOND REPORT**

January 8, 2026  
IGI Report Number **749504377**  
Description **NATURAL DIAMOND**  
Shape and Cutting Style **ROUND BRILLIANT**  
Measurements **6.57 - 6.61 X 3.97 MM**

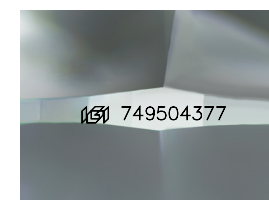
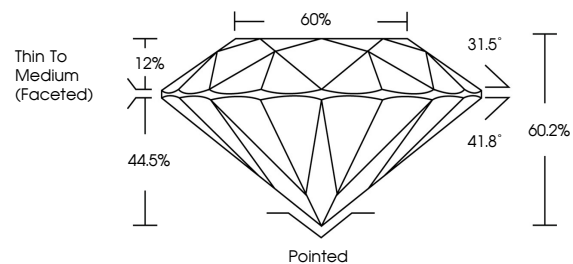
**GRADING RESULTS**

Carat Weight **1.04 CARAT**  
Color Grade **G**  
Clarity Grade **VVS 1**  
Cut Grade **EXCELLENT**

**ADDITIONAL GRADING INFORMATION**

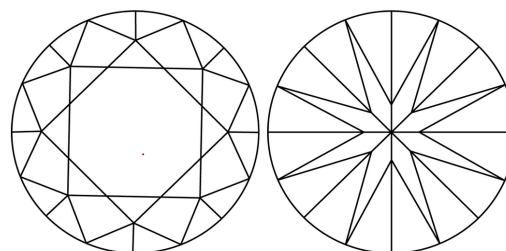
Polish **EXCELLENT**  
Symmetry **EXCELLENT**  
Fluorescence **NONE**  
Inscription(s) **749504377**

**PROPORTIONS**



Sample Image Used

**CLARITY CHARACTERISTICS**



**KEY TO SYMBOLS**

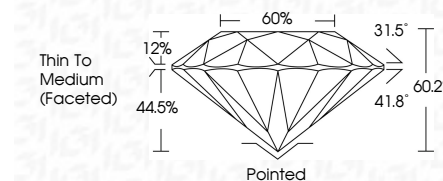
Red symbols indicate internal characteristics.  
Green symbols indicate external characteristics.

**COLOR**

D - F	G - J	K - M	N - R	S - Z	FANCY
Colorless	Near Colorless	Slightly Tinted	Very Light Color	Light Color	

**CLARITY**

FL	IF	VVS 1-2	VS 1-2	SI 1-2	I 1-3
Flawless	Internally Flawless	Very Very Slightly Included	Very Slightly Included	Slightly Included	Included



**ADDITIONAL GRADING INFORMATION**

Polish **EXCELLENT**  
Symmetry **EXCELLENT**  
Fluorescence **NONE**  
Inscription(s) **749504377**



**IGI**



January 8, 2026  
IGI Report No. **749504377**  
**ROUND BRILLIANT**  
**6.57 - 6.61 X 3.97 MM**  
Carat Weight **1.04 CARAT**  
Color Grade **G**  
Clarity Grade **VVS 1**  
Cut Grade **EXCELLENT**  
Depth **60.2%**  
Table **60%**  
Girdle **Thin To Medium (Faceted)**  
Culet **Pointed**  
Polish **EXCELLENT**  
Symmetry **EXCELLENT**  
Fluorescence **NONE**  
Inscriptions(s) **749504377**