



ELECTRONIC COPY

747586971
Report verification at igi.org



December 18, 2025
IGI Report Number **747586971**
Description **NATURAL DIAMOND**
Shape and Cutting Style **ROUND BRILLIANT**
Measurements **8.21 - 8.27 X 5.08 MM**

GRADING RESULTS

Carat Weight **2.15 CARATS**
Color Grade **H**
Clarity Grade **SI 2**
Cut Grade **EXCELLENT**

December 18, 2025
IGI Report Number **747586971**
Description **NATURAL DIAMOND**
Shape and Cutting Style **ROUND BRILLIANT**
Measurements **8.21 - 8.27 X 5.08 MM**

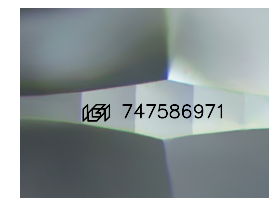
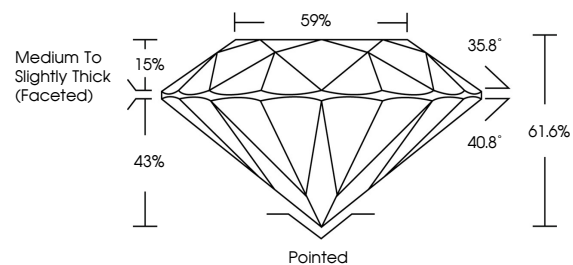
GRADING RESULTS

Carat Weight **2.15 CARATS**
Color Grade **H**
Clarity Grade **SI 2**
Cut Grade **EXCELLENT**

ADDITIONAL GRADING INFORMATION

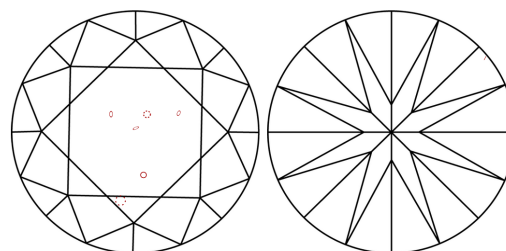
Polish **EXCELLENT**
Symmetry **EXCELLENT**
Fluorescence **NONE**
Inscription(s) **747586971**
Comments: IDEAL CUT ROUND BRILLIANT

PROPORTIONS



Sample Image Used

CLARITY CHARACTERISTICS



KEY TO SYMBOLS

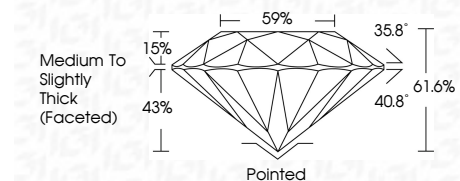
Red symbols indicate internal characteristics.
Green symbols indicate external characteristics.

COLOR

D - F	G - J	K - M	N - R	S - Z	FANCY
Colorless	Near Colorless	Slightly Tinted	Very Light Color	Light Color	

CLARITY

FL	IF	VVS ¹⁻²	VS ¹⁻²	SI ¹⁻²	I ¹⁻³
Flawless	Internally Flawless	Very Very Slightly Included	Very Slightly Included	Slightly Included	Included



ADDITIONAL GRADING INFORMATION

Polish **EXCELLENT**
Symmetry **EXCELLENT**
Fluorescence **NONE**
Inscription(s) **747586971**
Comments: IDEAL CUT ROUND BRILLIANT



IGI



December 18, 2025
IGI Report No. 747586971
ROUND BRILLIANT
8.21 - 8.27 X 5.08 MM
2.15 CARATS
H
SI 2
EXCELLENT
61.6%
59%
Medium To Slightly Thick (Faceted)
Pointed
EXCELLENT
EXCELLENT
NONE
747586971
Comments: IDEAL CUT ROUND BRILLIANT