



ELECTRONIC COPY

DIAMOND REPORT

November 14, 2025	
IGI Report Number	747575581
Description	NATURAL DIAMOND
Shape and Cutting Style	ROUND BRILLIANT
Measurements	9.65 - 9.73 X 6.09 MM

GRADING RESULTS

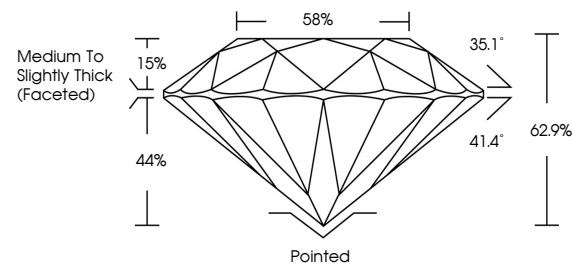
Carat Weight	3.54 CARATS
Color Grade	L
Clarity Grade	SI 1
Cut Grade	EXCELLENT

ADDITIONAL GRADING INFORMATION

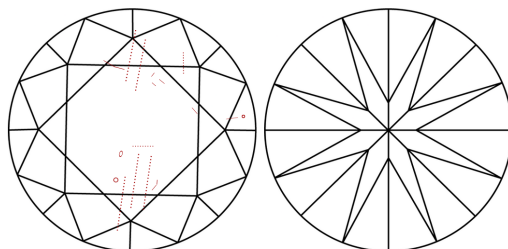
Polish	EXCELLENT
Symmetry	EXCELLENT
Fluorescence	SLIGHT
Inscription(s)	 151 747575581
Comments: Faint Brown	

747575581
Report verification at igi.org

PROPORTIONS

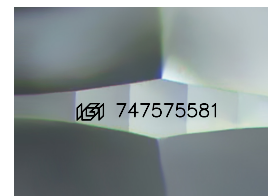


CLARITY CHARACTERISTICS



KEY TO SYMBOLS

Red symbols indicate internal characteristics.
Green symbols indicate external characteristics.



Sample Image Used

COLOR

D - F	G - J	K - M	N - R	S - Z	FANCY
Colorless	Near Colorless	Slightly Tinted	Very Light Color	Light Color	

CLARITY

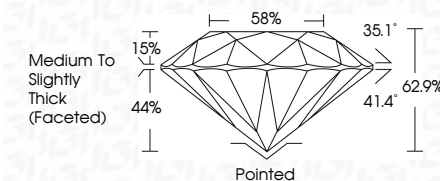
IF	VVS ¹⁻²	VS ¹⁻²	SI ¹⁻²	I ¹⁻³
Internally Flawless	Very Very Slightly Included	Very Slightly Included	Slightly Included	Included



November 14, 2025	
IGI Report Number	747575581
Description	NATURAL DIAMOND
Shape and Cutting Style	ROUND BRILLIANT
Measurements	9.65 - 9.73 X 6.09 MM

GRADING RESULTS

Carat Weight	3.54 CARATS
Color Grade	L
Clarity Grade	SI 1
Cut Grade	EXCELLENT



ADDITIONAL GRADING INFORMATION

Polish	EXCELLENT
Symmetry	EXCELLENT
Fluorescence	SLIGHT
Inscription(s)	 747575581
Comments: Faint Brown	



© IGI 2020, International Gemological Institute

FD - 10 20



THIS DOCUMENT WAS PRODUCED WITH THE FOLLOWING SECURITY MEASURES: SPECIAL DOCUMENT PAPER, INK SCREENS, WATERMARK, BACKGROUND DESIGNS, HOLOGRAM, AND OTHER SECURITY FEATURES NOT LISTED AND DO EXCEED DOCUMENT SECURITY INDUSTRY GUIDELINES

November 14, 2025
IGI Report No 747575581
ROUND BRILLIANT

6.65 - 6.73 x 6.09 MM	Color Grade	Clarity Grade	\$11	3.54 CARATS
Carat Weight	Cut Grade	Depth	EXCELLENT	L
	Table	Girdle	62.9%	
			59%	
			Medium to slightly	
			thick (exposed)	
	Culet		Pointed	
	Polish		EXCELLENT	
	Symmetry		EXCELLENT	
	Fluorescence		SLIGHT	
	Inscription(s)			
				688 747576551
	Comments:			
	Font Brown			

THEFTS

Comments: