



ELECTRONIC COPY

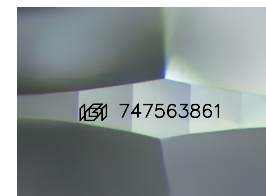
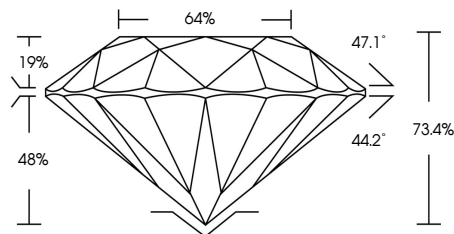
747563861
Report verification at igi.org



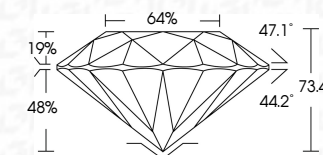
January 6, 2026
IGI Report Number **747563861**
Description **NATURAL DIAMOND**
Shape and Cutting Style **ROUND BRILLIANT**
Measurements **6.44 - 6.46 X 4.74 MM**
GRADING RESULTS
Carat Weight **1.32 CARAT**
Color Grade **BLACK, TREATED COLOR**

January 6, 2026
IGI Report Number **747563861**
Description **NATURAL DIAMOND**
Shape and Cutting Style **ROUND BRILLIANT**
Measurements **6.44 - 6.46 X 4.74 MM**
GRADING RESULTS
Carat Weight **1.32 CARAT**
Color Grade **BLACK, TREATED COLOR**
ADDITIONAL GRADING INFORMATION
Fluorescence **NONE**
Inscription(s) **747563861**

PROPORTIONS



Sample Image Used



COLOR

| D - F | G - J | K - M | N - R | S - Z | FANCY |
|-----------|----------------|-----------------|------------------|-------------|-------|
| Colorless | Near Colorless | Slightly Tinted | Very Light Color | Light Color | |

CLARITY

| FL | IF | VVS ¹⁻² | VS ¹⁻² | SI ¹⁻² | I ¹⁻³ |
|----------|---------------------|-----------------------------|------------------------|-------------------|------------------|
| Flawless | Internally Flawless | Very Very Slightly Included | Very Slightly Included | Slightly Included | Included |

ADDITIONAL GRADING INFORMATION

Fluorescence **NONE**
Inscription(s) **747563861**



IGI



January 6, 2026
IGI Report No 747563861
ROUND BRILLIANT
Carat Weight **1.32 CARAT**
Color Grade **BLACK, TREATED COLOR**
Depth **73.4%**
Table **64%**
Culet **NONE**
Fluorescence
Inscription(s) **747563861**