



**ELECTRONIC COPY**

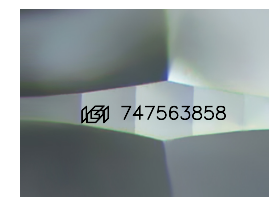
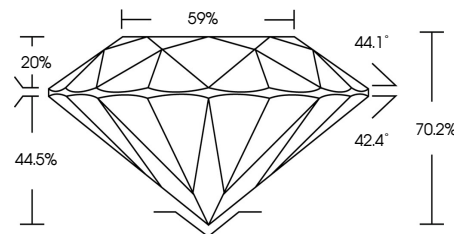
747563858  
Report verification at [igi.org](http://igi.org)



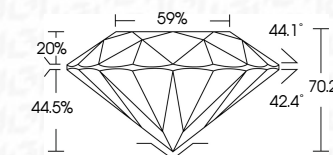
January 6, 2026  
IGI Report Number **747563858**  
Description **NATURAL DIAMOND**  
Shape and Cutting Style **ROUND BRILLIANT**  
Measurements **6.73 - 6.75 X 4.74 MM**  
**GRADING RESULTS**  
Carat Weight **1.43 CARAT**  
Color Grade **BLACK, TREATED COLOR**

January 6, 2026  
IGI Report Number **747563858**  
Description **NATURAL DIAMOND**  
Shape and Cutting Style **ROUND BRILLIANT**  
Measurements **6.73 - 6.75 X 4.74 MM**  
**GRADING RESULTS**  
Carat Weight **1.43 CARAT**  
Color Grade **BLACK, TREATED COLOR**  
**ADDITIONAL GRADING INFORMATION**  
Fluorescence **NONE**  
Inscription(s) **747563858**

**PROPORTIONS**



Sample Image Used



**COLOR**

D - F	G - J	K - M	N - R	S - Z	FANCY
Colorless	Near Colorless	Slightly Tinted	Very Light Color	Light Color	

**CLARITY**

FL	IF	VVS <sup>1-2</sup>	VS <sup>1-2</sup>	SI <sup>1-2</sup>	I <sup>1-3</sup>
Flawless	Internally Flawless	Very Very Slightly Included	Very Slightly Included	Slightly Included	Included

**ADDITIONAL GRADING INFORMATION**

Fluorescence **NONE**  
Inscription(s) **747563858**



**IGI**



January 6, 2026  
IGI Report No 747563858  
**ROUND BRILLIANT**  
1.43 CARAT  
6.73 - 6.75 X 4.74 MM  
Carat Weight  
Color Grade **BLACK, TREATED COLOR**  
Depth **70.2%**  
Table **20%**  
Girdle  
Culet  
Fluorescence **NONE**  
Inscription(s) **747563858**