



ELECTRONIC COPY

747550472
Report verification at igi.org

DIAMOND REPORT

January 21, 2026
IGI Report Number **747550472**
Description **NATURAL DIAMOND**
Shape and Cutting Style **CUT CORNERED RECTANGULAR MODIFIED BRILLIANT**
Measurements **11.06 X 8.52 X 5.74 MM**

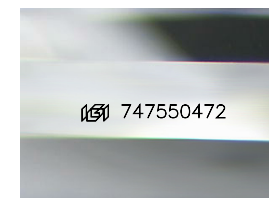
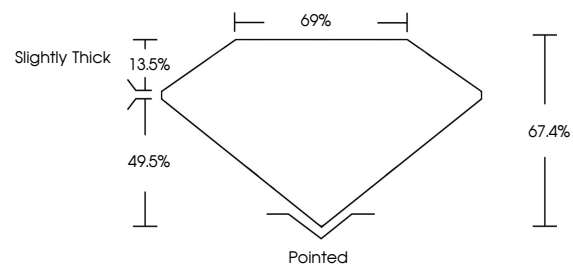
GRADING RESULTS

Carat Weight **5.17 CARATS**
Color Grade **I**
Clarity Grade **VVS 2**
Cut Grade **VERY GOOD**

ADDITIONAL GRADING INFORMATION

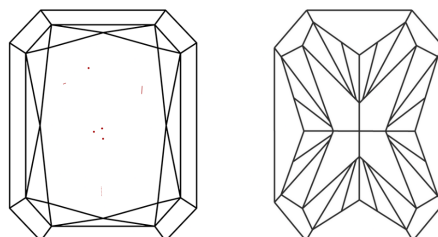
Polish **EXCELLENT**
Symmetry **EXCELLENT**
Fluorescence **NONE**
Inscription(s) **747550472**

PROPORTIONS



Sample Image Used

CLARITY CHARACTERISTICS



KEY TO SYMBOLS

Red symbols indicate internal characteristics.
Green symbols indicate external characteristics.

COLOR

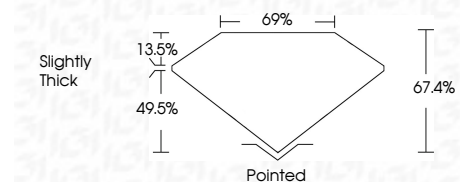
D - F	G - J	K - M	N - R	S - Z	FANCY
Colorless	Near Colorless	Slightly Tinted	Very Light Color	Light Color	

CLARITY

FL	IF	VVS ¹⁻²	VS ¹⁻²	SI ¹⁻²	I ¹⁻³
Flawless	Internally Flawless	Very Very Slightly Included	Very Slightly Included	Slightly Included	Included



January 21, 2026
IGI Report Number **747550472**
Description **NATURAL DIAMOND**
Shape and Cutting Style **CUT CORNERED RECTANGULAR MODIFIED BRILLIANT**
Measurements **11.06 X 8.52 X 5.74 MM**
GRADING RESULTS
Carat Weight **5.17 CARATS**
Color Grade **I**
Clarity Grade **VVS 2**
Cut Grade **VERY GOOD**



ADDITIONAL GRADING INFORMATION

Polish **EXCELLENT**
Symmetry **EXCELLENT**
Fluorescence **NONE**
Inscription(s) **747550472**



IGI



January 21, 2026
IGI Report No 747550472
CUT CORNERED RECT. MODIFIED BRILLIANT
11.06 X 8.52 X 5.74 MM
Carat Weight **5.17 CARATS**
Color Grade **I**
Clarity Grade **VVS 2**
Cut Grade **VERY GOOD**
Depth **67.4%**
Table **69%**
Girdle **Slightly Thick**
Culet **Pointed**
Polish **EXCELLENT**
Symmetry **EXCELLENT**
Fluorescence **NONE**
Inscriptions(s) **747550472**