



ELECTRONIC COPY

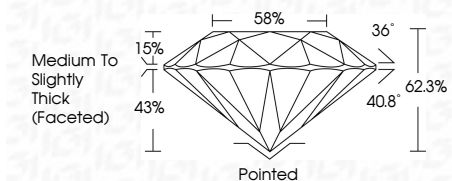
747549312
Report verification at igi.org



December 27, 2025
IGI Report Number **747549312**
Description **NATURAL DIAMOND**
Shape and Cutting Style **ROUND BRILLIANT**
Measurements **6.76 - 6.79 X 4.22 MM**

GRADING RESULTS

Carat Weight **1.20 CARAT**
Color Grade **H**
Clarity Grade **VVS 1**
Cut Grade **EXCELLENT**



ADDITIONAL GRADING INFORMATION

Polish **EXCELLENT**
Symmetry **EXCELLENT**
Fluorescence **NONE**
Inscription(s) **IGI 747549312**
Comments: IDEAL CUT ROUND BRILLIANT



December 27, 2025
IGI Report No. 747549312
ROUND BRILLIANT
6.76 - 6.79 X 4.22 MM
1.20 CARAT
H
Color Grade **EXCELLENT**
VVS 1
Clarity Grade **EXCELLENT**
62.3%
Depth
58%
Table
Medium To Slightly Thick (Faceted)
36°
Pointed
EXCELLENT
Culet
EXCELLENT
Polish
Symmetry
EXCELLENT
Fluorescence
NONE
Inscription(s)
IGI 747549312
Comments: IDEAL CUT ROUND BRILLIANT

DIAMOND REPORT

December 27, 2025
IGI Report Number **747549312**
Description **NATURAL DIAMOND**
Shape and Cutting Style **ROUND BRILLIANT**
Measurements **6.76 - 6.79 X 4.22 MM**

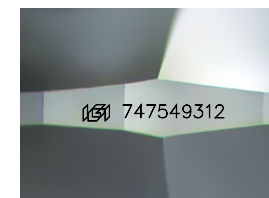
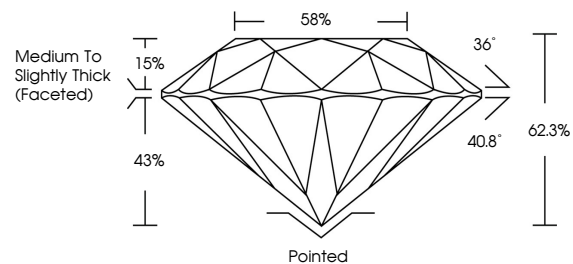
GRADING RESULTS

Carat Weight **1.20 CARAT**
Color Grade **H**
Clarity Grade **VVS 1**
Cut Grade **EXCELLENT**

ADDITIONAL GRADING INFORMATION

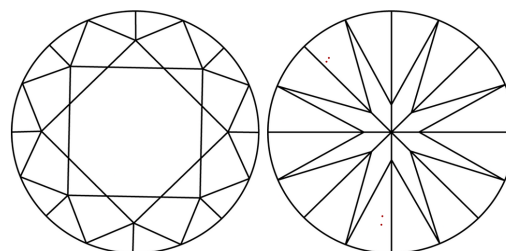
Polish **EXCELLENT**
Symmetry **EXCELLENT**
Fluorescence **NONE**
Inscription(s) **IGI 747549312**
Comments: IDEAL CUT ROUND BRILLIANT

PROPORTIONS



Sample Image Used

CLARITY CHARACTERISTICS



KEY TO SYMBOLS

Red symbols indicate internal characteristics.
Green symbols indicate external characteristics.

COLOR

D - F	G - J	K - M	N - R	S - Z	FANCY
Colorless	Near Colorless	Slightly Tinted	Very Light Color	Light Color	

CLARITY

FL	IF	VVS 1-2	VS 1-2	SI 1-2	I 1-3
Flawless	Internally Flawless	Very Very Slightly Included	Very Slightly Included	Slightly Included	Included

