



**ELECTRONIC COPY**

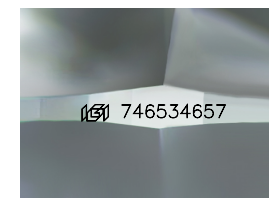
746534657  
Report verification at [igi.org](http://igi.org)



January 10, 2026  
IGI Report Number **746534657**  
Description **NATURAL DIAMOND**  
Shape and Cutting Style **CUSHION MODIFIED BRILLIANT**  
Measurements **7.36 X 5.70 X 3.79 MM**

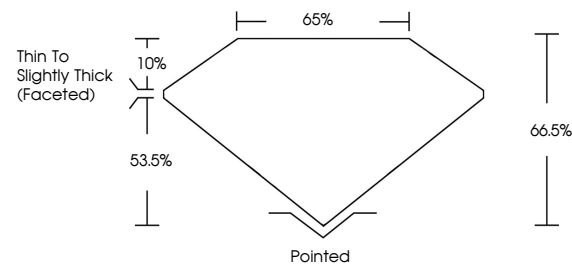
**GRADING RESULTS**

Carat Weight **1.20 CARAT**  
Color Grade **K**  
Clarity Grade **VS 2**  
Cut Grade **VERY GOOD**

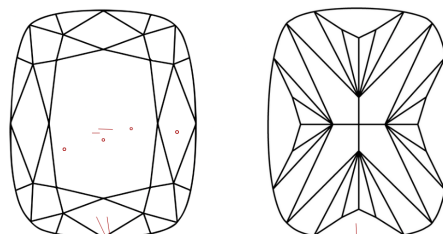


Sample Image Used

**PROPORTIONS**



**CLARITY CHARACTERISTICS**



**KEY TO SYMBOLS**

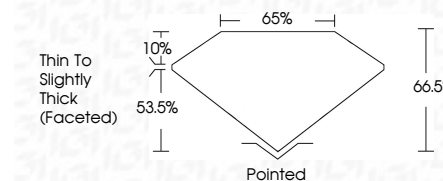
Red symbols indicate internal characteristics.  
Green symbols indicate external characteristics.

**COLOR**

D - F	G - J	K - M	N - R	S - Z	FANCY
Colorless	Near Colorless	Slightly Tinted	Very Light Color	Light Color	

**CLARITY**

FL	IF	VVS <sup>1-2</sup>	VS <sup>1-2</sup>	SI <sup>1-2</sup>	I <sup>1-3</sup>
Flawless	Internally Flawless	Very Very Slightly Included	Very Slightly Included	Slightly Included	Included



**ADDITIONAL GRADING INFORMATION**

Polish **EXCELLENT**  
Symmetry **EXCELLENT**  
Fluorescence **NONE**  
Inscription(s) **(IGI) 746534657**



**IGI**



January 10, 2026  
IGI Report No 746534657  
**CUSHION MODIFIED BRILLIANT**  
7.36 X 5.70 X 3.79 MM  
1.20 CARAT  
K  
VS 2  
VERY GOOD  
66.5%  
65%  
Thin To Slightly Thick (Faceted)  
Pointed  
EXCELLENT  
EXCELLENT  
NONE  
(IGI) 746534657