



March 12, 2026

IGI Report Number 746533005

CUT CORNERED RECTANGULAR

MODIFIED BRILLIANT

NATURAL DIAMOND

7.03 X 4.63 X 3.14 MM

Carat Weight 0.96 CARAT

Color Grade K

Clarity Grade VS 1

Cut Grade EXCELLENT

Polish EXCELLENT

Symmetry EXCELLENT

Fluorescence VERY SLIGHT

Inscription(s) (IGI) 746533005

DIAMOND REPORT

March 12, 2026

IGI Report Number

746533005

Description

NATURAL DIAMOND

Shape and Cutting Style

CUT CORNERED RECTANGULAR MODIFIED
BRILLIANT

Measurements

7.03 X 4.63 X 3.14 MM

GRADING RESULTS

Carat Weight

0.96 CARAT

Color Grade

K

Clarity Grade

VS 1

Cut Grade

EXCELLENT

ADDITIONAL GRADING INFORMATION

Polish

EXCELLENT

Symmetry

EXCELLENT

Fluorescence

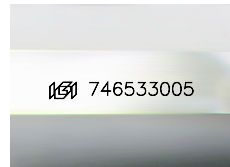
VERY SLIGHT

Identification Features

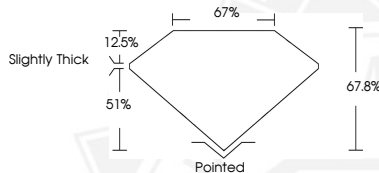
FEATHER

Inscription(s)

(IGI) 746533005



Sample Image Used



March 12, 2026

IGI Report Number 746533005

CUT CORNERED RECTANGULAR

MODIFIED BRILLIANT

NATURAL DIAMOND

7.03 X 4.63 X 3.14 MM

Carat Weight 0.96 CARAT

Color Grade K

Clarity Grade VS 1

Cut Grade EXCELLENT

Polish EXCELLENT

Symmetry EXCELLENT

Fluorescence VERY SLIGHT

Inscription(s) (IGI) 746533005



THIS DOCUMENT WAS PRODUCED WITH THE FOLLOWING SECURITY MEASURES: SPECIAL DOCUMENT PAPER, INK SCREENS, WATERMARK, BACKGROUND DESIGNS, HOLOGRAM AND OTHER SECURITY FEATURES NOT LISTED AND DO EXCEED DOCUMENT SECURITY INDUSTRY GUIDELINES.