



DIAMOND REPORT

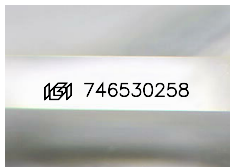
December 13, 2025
 IGI Report Number **746530258**
 Description **NATURAL DIAMOND**
 Shape and Cutting Style **CUT CORNERED RECTANGULAR MODIFIED
BRILLIANT**
 Measurements **5.52 X 5.40 X 3.60 MM**

GRADING RESULTS

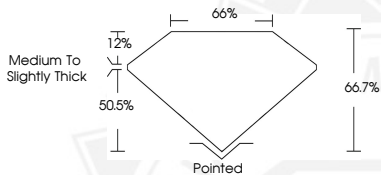
Carat Weight **0.90 CARAT**
 Color Grade **H**
 Clarity Grade **VS 2**
 Cut Grade **EXCELLENT**

ADDITIONAL GRADING INFORMATION

Polish **EXCELLENT**
 Symmetry **EXCELLENT**
 Fluorescence **NONE**
 Identification Features **FEATHER, CRYSTAL**
 Inscription(s) **IGI 746530258**



Sample Image Used



December 13, 2025
 IGI Report Number **746530258**
 CUT CORNERED RECTANGULAR
 MODIFIED BRILLIANT
 NATURAL DIAMOND
5.52 X 5.40 X 3.60 MM
 Carat Weight **0.90 CARAT**
 Color Grade **H**
 Clarity Grade **VS 2**
 Cut Grade **EXCELLENT**
 Polish **EXCELLENT**
 Symmetry **EXCELLENT**
 Fluorescence **NONE**
 Inscription(s) **IGI 746530258**



December 13, 2025
 IGI Report Number **746530258**
 CUT CORNERED RECTANGULAR
 MODIFIED BRILLIANT
 NATURAL DIAMOND
5.52 X 5.40 X 3.60 MM
 Carat Weight **0.90 CARAT**
 Color Grade **H**
 Clarity Grade **VS 2**
 Cut Grade **EXCELLENT**
 Polish **EXCELLENT**
 Symmetry **EXCELLENT**
 Fluorescence **NONE**
 Inscription(s) **IGI 746530258**



THIS DOCUMENT WAS PRODUCED WITH THE FOLLOWING SECURITY MEASURES: SPECIAL DOCUMENT PAPER, INK SCREENS, WATERMARK, BACKGROUND DESIGNS, HOLOGRAM AND OTHER SECURITY FEATURES NOT LISTED AND DO EXCEED DOCUMENT SECURITY INDUSTRY GUIDELINES.