



# INTERNATIONAL GEMOLOGICAL INSTITUTE

## DIAMOND REPORT

November 20, 2025

IGI Report Number

746529619

Description

NATURAL DIAMOND

Shape and Cutting Style

CUT CORNERED RECTANGULAR MODIFIED  
BRILLIANT

Measurements

6.69 X 4.63 X 3.10 MM

### GRADING RESULTS

Carat Weight

0.90 CARAT

Color Grade

I

Clarity Grade

VS 1

Cut Grade

VERY GOOD

### ADDITIONAL GRADING INFORMATION

Polish

EXCELLENT

Symmetry

EXCELLENT

Fluorescence

NONE

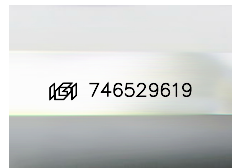
Identification Features

CRYSTAL, NEEDLE

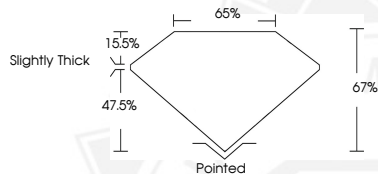
Inscription(s)

IGI 746529619

ELECTRONIC COPY



Sample Image Used



November 20, 2025

IGI Report Number 746529619

CUT CORNERED RECTANGULAR

MODIFIED BRILLIANT

NATURAL DIAMOND

6.69 X 4.63 X 3.10 MM

Carat Weight 0.90 CARAT

Color Grade I

Clarity Grade VS 1

Cut Grade VERY GOOD

Polish EXCELLENT

Symmetry EXCELLENT

Fluorescence NONE

Inscription(s) IGI 746529619



November 20, 2025

IGI Report Number 746529619

CUT CORNERED RECTANGULAR

MODIFIED BRILLIANT

NATURAL DIAMOND

6.69 X 4.63 X 3.10 MM

Carat Weight 0.90 CARAT

Color Grade I

Clarity Grade VS 1

Cut Grade VERY GOOD

Polish EXCELLENT

Symmetry EXCELLENT

Fluorescence NONE

Inscription(s) IGI 746529619



THIS DOCUMENT WAS PRODUCED WITH THE FOLLOWING SECURITY MEASURES: SPECIAL DOCUMENT PAPER, INK SCREENS, WATERMARK, BACKGROUND DESIGNS, HOLOGRAM AND OTHER SECURITY FEATURES NOT LISTED AND DO EXCEED DOCUMENT SECURITY INDUSTRY GUIDELINES.

For terms & conditions and to verify this report, please visit [www.igi.org](http://www.igi.org)