



INTERNATIONAL GEMOLOGICAL INSTITUTE

DIAMOND REPORT

December 5, 2025
IGI Report Number **743554726**
Description **NATURAL DIAMOND**
Shape and Cutting Style **CUT CORNERED RECTANGULAR MODIFIED
BRILLIANT**
Measurements **5.46 X 4.31 X 3.12 MM**

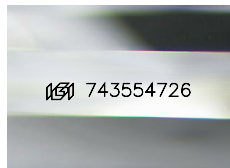
GRADING RESULTS

Carat Weight **0.71 CARAT**
Color Grade **I**
Clarity Grade **VS 1**
Cut Grade **VERY GOOD**

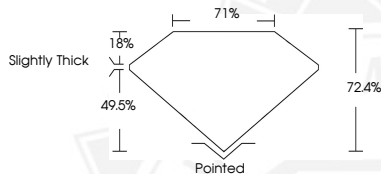
ADDITIONAL GRADING INFORMATION

Polish **EXCELLENT**
Symmetry **EXCELLENT**
Fluorescence **NONE**
Identification Features **CRYSTAL, FEATHER**
Inscription(s) **IGI 743554726**

ELECTRONIC COPY



Sample Image Used



December 5, 2025

IGI Report Number **743554726**
CUT CORNERED RECTANGULAR
MODIFIED BRILLIANT
NATURAL DIAMOND
5.46 X 4.31 X 3.12 MM
Carat Weight **0.71 CARAT**
Color Grade **I**
Clarity Grade **VS 1**
Cut Grade **VERY GOOD**
Polish **EXCELLENT**
Symmetry **EXCELLENT**
Fluorescence **NONE**
Inscription(s) **IGI 743554726**



December 5, 2025

IGI Report Number **743554726**
CUT CORNERED RECTANGULAR
MODIFIED BRILLIANT
NATURAL DIAMOND
5.46 X 4.31 X 3.12 MM
Carat Weight **0.71 CARAT**
Color Grade **I**
Clarity Grade **VS 1**
Cut Grade **VERY GOOD**
Polish **EXCELLENT**
Symmetry **EXCELLENT**
Fluorescence **NONE**
Inscription(s) **IGI 743554726**



THIS DOCUMENT WAS PRODUCED WITH THE FOLLOWING SECURITY MEASURES: SPECIAL DOCUMENT PAPER, INK SCREENS, WATERMARK, BACKGROUND DESIGNS, HOLOGRAM AND OTHER SECURITY FEATURES NOT LISTED AND DO EXCEED DOCUMENT SECURITY INDUSTRY GUIDELINES.

For terms & conditions and to verify this report, please visit www.igi.org