



December 24, 2025

IGI Report Number 743545628

**ROUND BRILLIANT
NATURAL DIAMOND**
4.90 - 4.93 X 3.09 MM

Carat Weight **0.46 CARAT**
Color Grade **H**
Clarity Grade **VS 1**
Cut Grade **EXCELLENT**
Polish **EXCELLENT**
Symmetry **EXCELLENT**
Fluorescence **NONE**
Inscription(s) **IGI 743545628**

DIAMOND REPORT

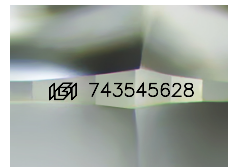
December 24, 2025
IGI Report Number **743545628**
Description **NATURAL DIAMOND**
Shape and Cutting Style **ROUND BRILLIANT**
Measurements **4.90 - 4.93 X 3.09 MM**

GRADING RESULTS

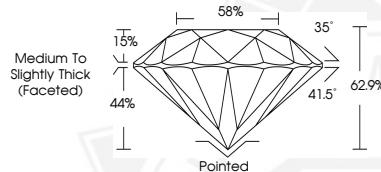
Carat Weight **0.46 CARAT**
Color Grade **H**
Clarity Grade **VS 1**
Cut Grade **EXCELLENT**

ADDITIONAL GRADING INFORMATION

Polish **EXCELLENT**
Symmetry **EXCELLENT**
Fluorescence **NONE**
Identification Features **CLOUD, CRYSTAL, NEEDLE**
Inscription(s) **IGI 743545628**



Sample Image Used



December 24, 2025

IGI Report Number 743545628

**ROUND BRILLIANT
NATURAL DIAMOND**
4.90 - 4.93 X 3.09 MM

Carat Weight **0.46 CARAT**
Color Grade **H**
Clarity Grade **VS 1**
Cut Grade **EXCELLENT**
Polish **EXCELLENT**
Symmetry **EXCELLENT**
Fluorescence **NONE**
Inscription(s) **IGI 743545628**



THIS DOCUMENT WAS PRODUCED WITH THE FOLLOWING SECURITY MEASURES: SPECIAL DOCUMENT PAPER, INK SCREENS, WATERMARK, BACKGROUND DESIGNS, HOLOGRAM AND OTHER SECURITY FEATURES NOT LISTED AND DO EXCEED DOCUMENT SECURITY INDUSTRY GUIDELINES.