



ELECTRONIC COPY

DIAMOND REPORT

December 23, 2025	
IGI Report Number	743536320
Description	NATURAL DIAMOND
Shape and Cutting Style	ROUND BRILLIANT
Measurements	6.57 - 6.59 X 4.11 MM

GRADING RESULTS

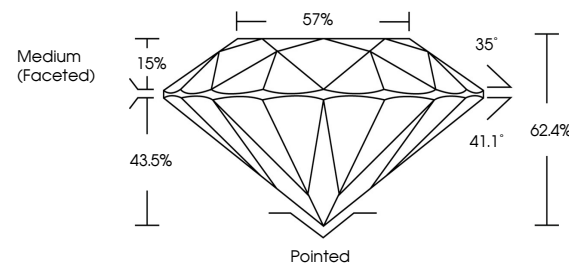
Carat Weight	1.10 CARAT
Color Grade	I
Clarity Grade	VVS 2
Cut Grade	EXCELLENT

ADDITIONAL GRADING INFORMATION

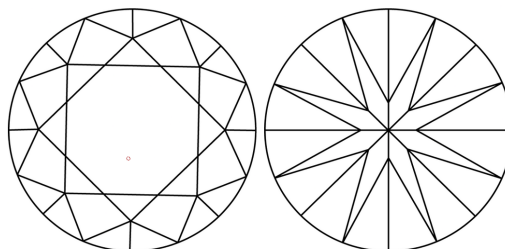
Polish	EXCELLENT
Symmetry	EXCELLENT
Fluorescence	NONE
Inscription(s)	 743536320
Comments: IDEAL CUT ROUND BRILLIANT	

743536320
Report verification at igi.org

PROPORTIONS

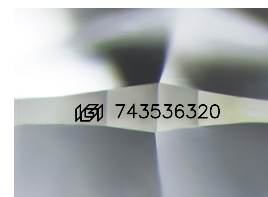


CLARITY CHARACTERISTICS



KEY TO SYMBOLS

Red symbols indicate internal characteristics.
Green symbols indicate external characteristics.



Sample Image Used

COLOR

D - F	G - J	K - M	N - R	S - Z	FANCY
Colorless	Near Colorless	Slightly Tinted	Very Light Color	Light Color	

CLARITY

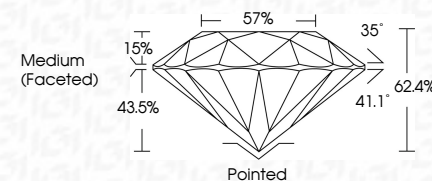
FL	IF	VVS ¹⁻²	VS ¹⁻²	SI ¹⁻²	I ¹⁻³
Flawless	Internally Flawless	Very Very Slightly Included	Very Slightly Included	Slightly Included	Included



December 23, 2025	
IGI Report Number	743536320
Description	NATURAL DIAMOND
Shape and Cutting Style	ROUND BRILLIANT
Measurements	6.57 - 6.59 X 4.11 MM

GRADING RESULTS

Carat Weight	1.10 CARAT
Color Grade	I
Clarity Grade	VVS 2
Cut Grade	EXCELLENT



ADDITIONAL GRADING INFORMATION

Polish	EXCELLENT
Symmetry	EXCELLENT
Fluorescence	NONE
Inscription(s)	(G) 743536320
Comments: IDEAL CUT ROUND BRILLIANT	



IG



© IGI 2020, International Gemological Institute

FD - 10 20



THIS DOCUMENT WAS PRODUCED WITH THE FOLLOWING SECURITY MEASURES: SPECIAL DOCUMENT PAPER, INK SCREENS, WATERMARK, BACKGROUND DESIGNS, HOLOGRAM AND OTHER SECURITY FEATURES NOT LISTED AND DO EXCEED DOCUMENT SECURITY INDUSTRY GUIDELINES

December 23, 2025
IGI Report No 743536320
ROUND BRILLIANT

6.57 - 6.59 X 4.11 MM	Carat Weight	1.10 CARAT
Color Grade		I
Clarity Grade		VVS 2
Cut Grade		EXCELLENT
Depth		62.4%
Table		57%
Grade		Medium (Fosted)
Culet		Pointed
Polish		EXCELLENT
Symmetry		EXCELLENT
Fluorescence		NONE
Inscriptions		See 765343970

Comments:
IDEAL CUT ROUND BRILLIANT