



ELECTRONIC COPY

743535493
Report verification at igi.org



June 12, 2026
IGI Report Number **743535493**
Description **NATURAL DIAMOND**
Shape and Cutting Style **PRINCESS CUT**
Measurements **6.22 X 6.03 X 4.49 MM**
GRADING RESULTS
Carat Weight **1.50 CARAT**
Color Grade **J**
Clarity Grade **SI 1**
Cut Grade **VERY GOOD**

DIAMOND REPORT

June 12, 2026
IGI Report Number **743535493**
Description **NATURAL DIAMOND**
Shape and Cutting Style **PRINCESS CUT**
Measurements **6.22 X 6.03 X 4.49 MM**

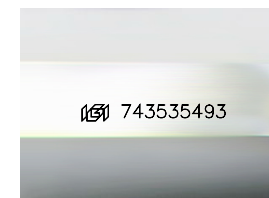
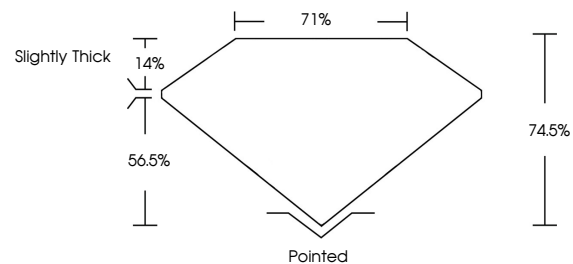
GRADING RESULTS

Carat Weight **1.50 CARAT**
Color Grade **J**
Clarity Grade **SI 1**
Cut Grade **VERY GOOD**

ADDITIONAL GRADING INFORMATION

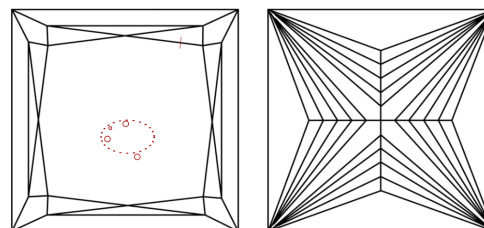
Polish **EXCELLENT**
Symmetry **EXCELLENT**
Fluorescence **SLIGHT**
Inscription(s) **743535493**

PROPORTIONS



Sample Image Used

CLARITY CHARACTERISTICS



KEY TO SYMBOLS

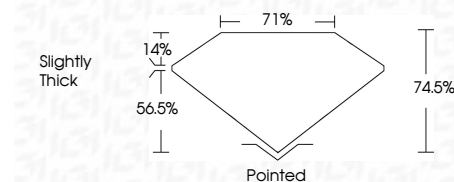
Red symbols indicate internal characteristics.
Green symbols indicate external characteristics.

COLOR

D - F	G - J	K - M	N - R	S - Z	FANCY
Colorless	Near Colorless	Slightly Tinted	Very Light Color	Light Color	

CLARITY

FL	IF	VVS ¹⁻²	VS ¹⁻²	SI ¹⁻²	I ¹⁻³
Flawless	Internally Flawless	Very Very Slightly Included	Very Slightly Included	Slightly Included	Included



ADDITIONAL GRADING INFORMATION

Polish **EXCELLENT**
Symmetry **EXCELLENT**
Fluorescence **SLIGHT**
Inscription(s) **743535493**



IGI



June 12, 2026	1.50 CARAT	J	SI 1	74.5%	71%	Slightly Thick	Pointed	EXCELLENT	EXCELLENT	SLIGHT	743535493
IGI Report No 743535493	6.22 X 6.03 X 4.49 MM	VERY GOOD	VERY GOOD	74.5%	71%	Slightly Thick	Pointed	EXCELLENT	EXCELLENT	SLIGHT	743535493
PRINCESS CUT	Carat Weight	Color Grade	Clarity Grade	Depth	Table	Girdle	Culet	Polish	Symmetry	Fluorescence	Inscription(s)