



ELECTRONIC COPY

743535390
Report verification at igi.org

DIAMOND REPORT

March 23, 2026
IGI Report Number **743535390**
Description **NATURAL DIAMOND**
Shape and Cutting Style **EMERALD CUT**
Measurements **6.25 X 4.78 X 3.38 MM**

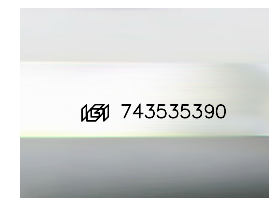
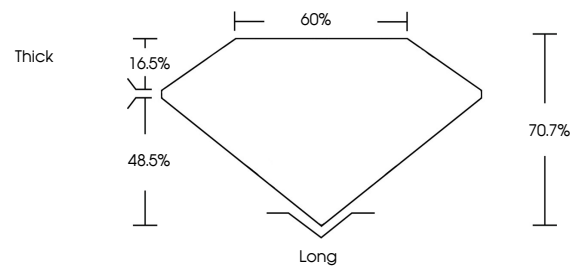
GRADING RESULTS

Carat Weight **1.00 CARAT**
Color Grade **G**
Clarity Grade **I 1**
Cut Grade **VERY GOOD**

ADDITIONAL GRADING INFORMATION

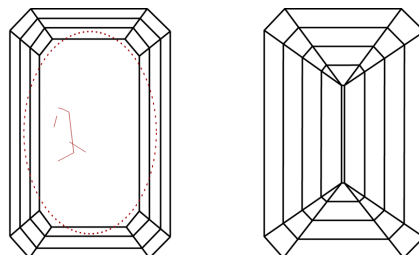
Polish **EXCELLENT**
Symmetry **EXCELLENT**
Fluorescence **NONE**
Inscription(s) **743535390**

PROPORTIONS



Sample Image Used

CLARITY CHARACTERISTICS



KEY TO SYMBOLS

Red symbols indicate internal characteristics.
Green symbols indicate external characteristics.

COLOR

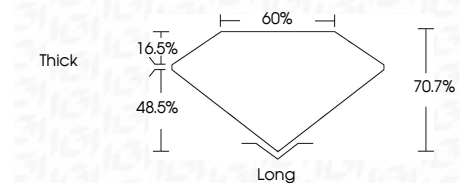
| D - F | G - J | K - M | N - R | S - Z | FANCY |
|-----------|----------------|-----------------|------------------|-------------|-------|
| Colorless | Near Colorless | Slightly Tinted | Very Light Color | Light Color | |

CLARITY

| FL | IF | VVS ¹⁻² | VS ¹⁻² | SI ¹⁻² | I ¹⁻³ |
|----------|---------------------|-----------------------------|------------------------|-------------------|------------------|
| Flawless | Internally Flawless | Very Very Slightly Included | Very Slightly Included | Slightly Included | Included |



March 23, 2026
IGI Report Number **743535390**
Description **NATURAL DIAMOND**
Shape and Cutting Style **EMERALD CUT**
Measurements **6.25 X 4.78 X 3.38 MM**
GRADING RESULTS
Carat Weight **1.00 CARAT**
Color Grade **G**
Clarity Grade **I 1**
Cut Grade **VERY GOOD**



ADDITIONAL GRADING INFORMATION

Polish **EXCELLENT**
Symmetry **EXCELLENT**
Fluorescence **NONE**
Inscription(s) **743535390**



IGI



| | | | | | | | | | | | | | | | |
|----------------|-------------------------|-------------|-----------------------|------------|---|-----|-----------|-------|-----|-------|------|-----------|-----------|------|-----------|
| March 23, 2026 | IGI Report No 743535390 | EMERALD CUT | 6.25 X 4.78 X 3.38 MM | 1.00 CARAT | G | I 1 | VERY GOOD | 70.7% | 60% | Thick | Long | EXCELLENT | EXCELLENT | NONE | 743535390 |
|----------------|-------------------------|-------------|-----------------------|------------|---|-----|-----------|-------|-----|-------|------|-----------|-----------|------|-----------|